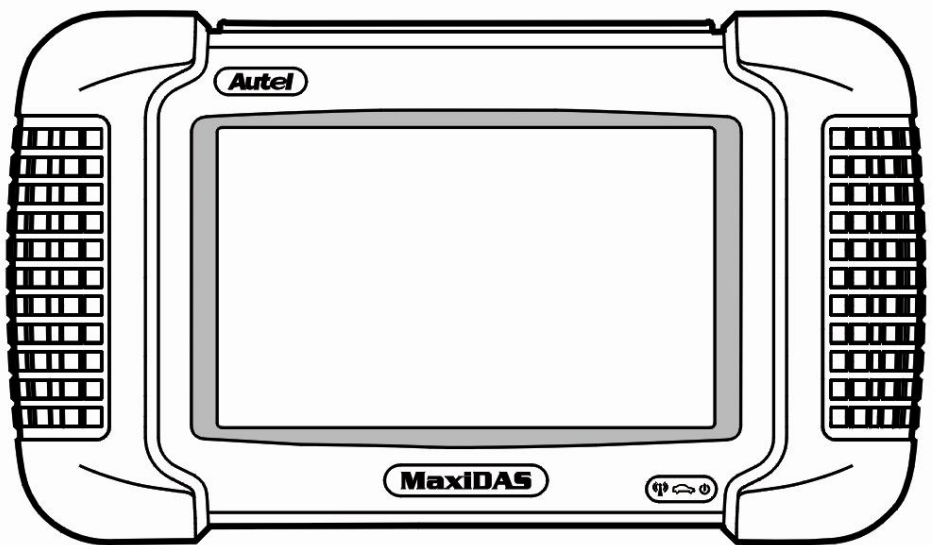


User's Manual

Autel[®]

MaxiDAS[®] DS708

Automotive Diagnostic System



*Innovative Technologies Make
Diagnosis Simple!*

IMPORTANT

Before operating or maintaining this unit, please read this manual carefully paying extra attention to the safety warnings and precautions.



www.maxidas.com www.auteltech.com



1-877-288-3587/ 1-877-AUTELUS (North America) 0086-755-86147779 (China)



support@auteltech.com

For technical assistance in all other markets, contact your local selling agent.

COPYRIGHTS

No part of this manual may be reproduced, stored in a retrieval system or transmitted, in any form or by any means, electronic, mechanical, photocopying, recording, or otherwise, without the prior written permission of Autel.

DISCLAIMER

All information, illustrations, and specifications in this manual are based on the latest information available at the time of publication. Autel reserves the right to make changes at any time without notice. Further, Autel shall not be liable for errors contained herein or for incidental or consequential damages (including lost profits).

All software screens shown in this manual are examples. Actual test screens vary for each vehicle being tested.

TRADEMARKS


Autel[®], MaxiDAS[®], MaxiScan[®], Maxivideo[™], MaxiRecorder[™], MaxiTPMS[®], MaxiSys[™], and MaxiCheck[™] are trademarks of Autel Intelligent Technology Co., Ltd, registered in China, the United States and other countries. All other marks are trademarks or registered trademarks of their respective holders.

Contents

IMPORTANT NOTICES	Inside Front Cover
Safety Information	5
1. Introduction	1
1.1. Product Overview	1
1.2. Component Descriptions	1
1.2.1. MaxiDAS® Scan Tool	1
1.2.2. Memory Card	2
1.2.3. DLC Cables, Adapters and other Accessories	2
1.2.4. Technical Specifications	4
1.3. Software Descriptions	4
1.3.1. Operating System Software.....	4
1.3.2. Scan Tool Software Installation / Updates.....	4
1.3.3. Software Applications Overview	4
2. Getting Started	8
2.1. Power up the Scan Tool	8
2.2. Adjust Default Settings	8
2.3. Install the PC Software	9
2.4. Register the Tool	10
2.5. Test Startup and Vehicle Connection	10
3. Diagnostics Applications	11
3.1. Test Startup and Vehicle Connection	11
3.1.1. Step 1: Connect the Cable	11
3.1.2. Step 2: Enter the Vehicle Information and Select the System to Be Tested	14
3.1.3. Step 3: Select the Diagnostic Function	17
3.2. Diagnostic Trouble Codes	18
3.2.1. Read Codes.....	18
3.2.2. Erase Codes	18
3.3. Live Data	19
3.3.1 Basic Live Data Procedure	19
3.3.2 Live Data Functions	20
3.3.3 Custom Live Data.....	23
3.4. Vehicle Information	24
3.5. Active Test	24
3.6. Generic OBD II Functions	25
3.6.1. General Procedures	25
3.6.2. Functions Description	26


4.	Data Manager & Printing	29
4.1.	General Procedures.....	29
4.2.	Play Back	29
4.3.	Data Logging	30
4.4.	Screen Capture	31
4.5.	Printing	32
5.	System Setup.....	33
5.1.	General Procedures.....	33
5.2.	Wi-Fi.....	33
5.3.	Network.....	34
5.4.	Unit	35
5.5.	Date/Time.....	35
5.6.	Language.....	36
5.7.	Backlight	36
5.8.	Beep	37
5.9.	Touch.....	37
5.10.	Remote Desk	38
5.11.	About	38
6.	Software Update	39
6.1.	Update the Scan Tool Software through the Scan Tool.....	39
6.2.	Update the Scan Tool Software via a Computer	40
6.3.	View or Delete Programs.....	41
6.4.	Quick Troubleshooting Tips for Software Update.....	42
7.	Maintenance, Warranty & Service.....	43
7.1.	Cleaning the Touch Screen.....	43
7.2.	Cleaning and Inspecting the Unit	43
7.3.	Quick Troubleshooting Tips	43
7.4.	Definitions of Navigation Buttons.....	44
7.5.	Service Procedures	44
7.5.1.	Technical Service	44
7.5.2.	Repair Service	44
7.5.3.	Order Information	45
7.6.	Limited One Year Warranty.....	45


SAFETY INFORMATION


 **DANGER:** When an engine is operating, keep the service area **WELL VENTILATED** or attach a building exhaust removal system to the engine exhaust system. Engines produce carbon monoxide, an odorless, poisonous gas that causes slower reaction time and can lead to serious personal injury or loss of life.

SAFETY DEFINITIONS

Follow all **DANGER**, **WARNING**, **IMPORTANT**, and **NOTE** messages in this manual. These safety messages are defined as follows:

 **DANGER or WARNING:** Means you risk bodily harm and /or possible loss of life.

 **IMPORTANT:** Means the information demands special attention or that you risk damage to the vehicle or the tool.

 **NOTE:** Provides clarity and helpful tips.

WARNINGS AND IMPORTANTS:

The safety messages cover situations Autel is aware of. Autel cannot know, evaluate or advise you as to all of the possible hazards. You must be certain that any conditions or service procedures encountered do not jeopardize your personal safety.

- Always perform automotive testing in a safe environment.
- Wear safety eye protection that meets ANSI standards.
- Keep clothing, hair, hands, tools, test equipment, etc. away from all moving or hot engine parts.
- Operate the vehicle in a well ventilated work area: Exhaust gases are poisonous.
- Put the transmission in **PARK** (for automatic transmission) or **NEUTRAL** (for manual transmission) and make sure the parking brake is engaged.
- Put blocks in front of the drive wheels and never leave the vehicle unattended while running tests.
- Use extreme caution when working around the ignition coil, distributor cap, ignition wires and spark plugs. These components create hazardous voltages when the engine is running.
- Keep a fire extinguisher suitable for gasoline/chemical/ electrical fires nearby.
- Don't connect or disconnect any test equipment while the ignition is on or the engine is running.
- Keep the scan tool dry, clean, free from oil/water or grease. Use a mild detergent on a clean cloth to clean the outside of the scan tool, when necessary.
- Do not drive the vehicle and operate the scan tool at the same time. Any distractions may cause an accident.
- Refer to the service manual for the vehicle being serviced and adhere to all diagnostic procedures and precautions. Failure to do so could result in personal injury or otherwise unneeded repair.
- To avoid damaging the scan tool or generating false data, make sure the vehicle battery is fully charged and the connection to the vehicle DLC is clean and secure.
- Do not place the scan tool on the distributor of a vehicle. Strong electro-magnetic interference can damage the scan tool.

1. Introduction

1.1. Product Overview

The MaxiDAS[®] Diagnostic System is the easiest-to-use scan tool which features simple touch screen navigation. It is ingeniously designed to create the functionality of the OEM tools used by automotive manufacturer's dealers, empowering independent garages to provide comprehensive servicing in their own workshops without relying on dealer availability.

MaxiDAS[®] has a memory card that contains the operating system and scan software applications. It can help you diagnose symptoms, codes, and complaints quickly and efficiently by reading diagnostic trouble codes, and viewing live data stream, freeze frame data, and vehicle information from the vehicle's ECUs. It can also perform such special functions as actuation tests, immobilizer key coding and adaptation on the vehicle. You can save recorded data readings, capture an image of the current screen and print information.

1.2. Component Descriptions

1.2.1. MaxiDAS[®] Scan Tool

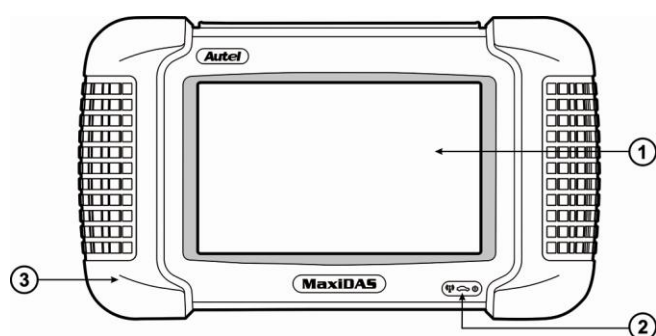


Figure 1.1: MaxiDAS[®] Front View

- ① **Touch Screen Display** - displays the menus and data screens.
- ② **LEDs** - the three light-emitting diodes indicate certain system conditions.
 - **Wireless LAN Activity LED** - illuminates when a wireless local area network (LAN) is enabled, flashes when data is being sent or received.
 - **Vehicle Communication LED** - illuminates when the scan tool is communicating/ linking with systems of the vehicle being tested.
 - **Power LED** - illuminates when the scan tool is connected to a power source.
- ③ **Rubber Boot** - protects the scan tool from accidental damage if dropped.

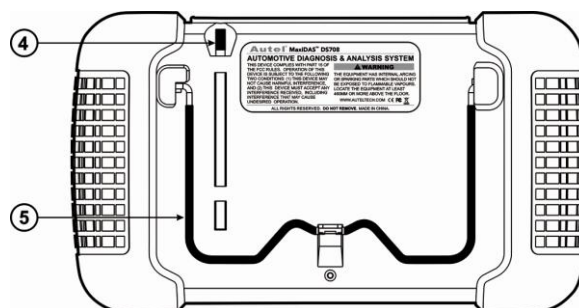


Figure 1.2: MaxiDAS[®] Back View

- ④ **Stylus Pen** - selects items and enters information
- ⑤ **Stand** - flips out for setting the scan tool in an upright position.

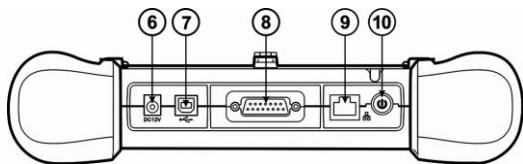


Figure 1.3: MaxiDAS® Top View

- ⑥ **External DC Power Port** - connects the 12 volt power adapter to power the tool for updating, printing, Internet access, and etc. when disconnected from the vehicle.
 - ⑦ **USB (universal serial bus) Port** - connects peripheral devices such as printers, and portable USB Drives.
 - ⑧ **DB15-Pin Port** - connects the vehicle DLC cable.
 - ⑨ **RS 232 Serial Port** - connects the PC serial cable.
 - ⑩ **On / Off Button** - turns the scan tool on and off.
- ☑ **NOTE:** No internal battery power is provided with this scan tool.

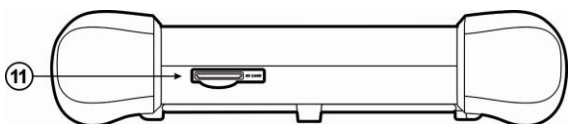


Figure 1.4: MaxiDAS® Down View

- ⑪ **SD Card Slot** - holds the System SD Card.
- ☑ **NOTE:** Do not remove memory card from the scan tool unless performing software updates to card.

1.2.2. Memory Card

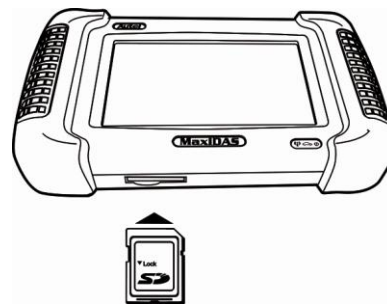


Figure 1.5: Memory Card into Scan Tool Slot

The memory card contains the scan tool's operating software and applications (**DO NOT REMOVE THE MEMORY CARD UNLESS PERFORMING SOFTWARE UPDATES TO CARD**).

1.2.3. DLC Cables, Adapters and other Accessories

1. DLC Cables

The DS708 unit can be powered through the DLC cable when connected to an OBD-II vehicle. The DLC cable connects the scan tool to the vehicle's data link connector (DLC). An optional extension cable may also be used.

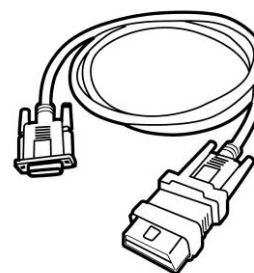


Figure 1.6: DLC Cable

2. OBD I Adapters

The OBD I adapters are for Non-OBD II vehicles. The adapters used depend on the type of vehicle make being tested. The most common adapters are shown below.

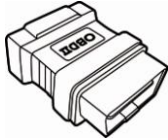
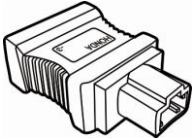


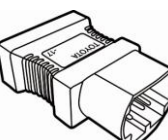
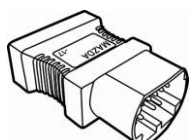
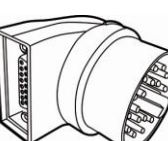
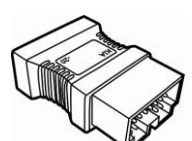
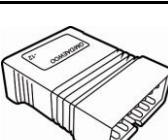
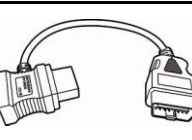
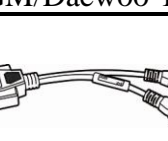
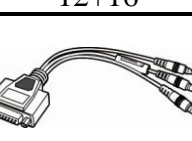
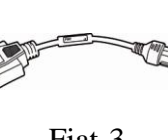
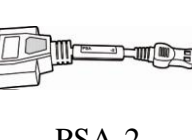

 OBD-16	 Honda-3
 Nissan-14	 Toyota-23
 Toyota-17	 Mazda-17
 BMW-20	 Kia-20
 GM/Daewoo-12	 Mitsubishi/Hyundai-12+16
 Audi-4	 Universal-3
 Fiat-3	 PSA-2
 Benz-38	

Figure 1.7: OBD I Adapters

3. Other Accessories



RS232 Serial Cable

Connects the scan tool to the Ethernet network.



USB Cable

Connects peripheral devices such as printers, and portable USB Drivers.



Clipper Cable

Provides power to the scan tool through connection to the vehicle battery as some non-OBD II vehicles cannot provide power to the scan tool via DLC connection.



AC/DC External Power Adapter

Connects the scan tool to the External DC Power Port for external power supply.



Compact Disc (CD)

Includes the Instruction Video Clip, the User's Manual, remote desktop, print services, update application, and etc.



Cigarette Lighter

Provides power to the scan tool through connection to the vehicle's cigarette lighter receptacle as some non-OBD II vehicles cannot provide power to the scan tool via DLC connection.



SD Card Reader

Allows files on the SD card to be accessed to a PC.

1.2.4. Technical Specifications

- **Operating System:** Windows CE
- **Processor:** ARM9 + ARM7 dual processor
- **Memory:** 4 Gigabyte SD card
- **Display:** 7" TFT (800*400 dpi) color display with resistive touch panel
- **Communications:** 10/100 Ethernet Port, 802.11 b/g Wireless LAN
- **Input Voltage:** 8.0-32.0V power provided via vehicle battery
- **Operating Temperature:** 0 to 60 °C (32 to 140 °F)
- **Storage Temperature:** -10 to 70 °C (14 to 158 °F)
- **Printer Interface:** Wi-Fi, USB, Ethernet
- **Dimension:** 282mm (11.10") * 164mm (6.42") * 60mm (2.36")
- **Unit Weight:** 1.1kg (2.95lb)
- **Protocols:** ISO 9141-2, K/L lines, Flashing code, SAE-J1850 VPW, SAE-J1850 PWM, CAN ISO 11898 ISO 15765-4, High speed, Middle speed, Low speed and Single wire CAN

1.3. Software Descriptions

This section describes the software currently available for the scan tool.

NOTE: This section does not describe any PC software that is used along with the scan tool.

1.3.1. Operating System Software

The operating system is Microsoft Windows CE Embedded. When you turn the scan tool on, the software provides fast "boot-up" and an icon-based application home screen.

1.3.2. Scan Tool Software Installation / Updates

The scan tool software must be installed before the tool can be used. The software is usually preinstalled into the SD card included. The software can be downloaded and updated either via the Update program of the scan tool or on a PC through the update application software.

For complete instructions, refer to Chapter VI Software Update on page 39.

1.3.3. Software Applications Overview

When you turn the scan tool on, the Home Screen displays options for selecting the software applications in the scan tool as shown below:

1. Home Screen

The Home Screen contains a menu of the groups of software installed in the scan tool. All current software applications are included in the scan tool.

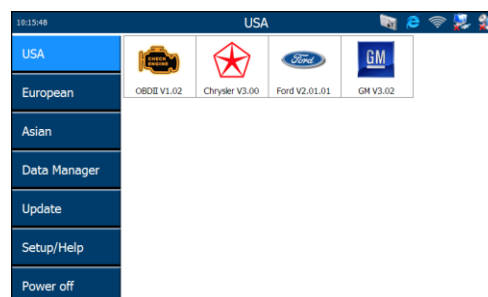


Figure 1.8: Home Screen

With the Home Screen displayed, you use either the stylus pen or a finger to select an option to display the icons to choose. The options on the Home Screen are described in the next few sections as follows:

- **USA**
- **European**
- **Asian**
- **Data Manager**
- **Update**
- **Setup/Help**

2. USA

When you click on USA from the Home Screen (Figure 1.8 on page 4), the USA screen appears, as shown in the example below.

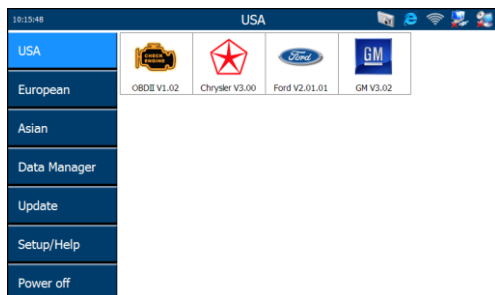


Figure 1.9: USA Screen

This screen contains options for using the following software applications:

- **OBD II application is for OBD II diagnostic testing.**
- **Chrysler application is for Chrysler Vehicle diagnostic testing.**
- **Ford application is for Ford Vehicle diagnostic testing.**
- **GM application is for GM Vehicle diagnostic testing.**

3. European

When you click on European from the Home Screen (Figure 1.8 on page 4), the European screen appears, as shown in the figure below.



Figure 1.10: European Screen

This screen contains options for using the diagnostic software applications for European vehicles.

4. Asian

When you click on Asian from the Home Screen (Figure 1.8 on page 4), the Asian screen appears, as shown in the example below.



Figure 1.11: Asian Screen

This screen contains options for using the diagnostic software applications for Asian vehicles.

5. Data Manager

When you click on Data Manager from the Home screen (Figure 1.8 on page 4), the Data Manager screen appears, as shown below.

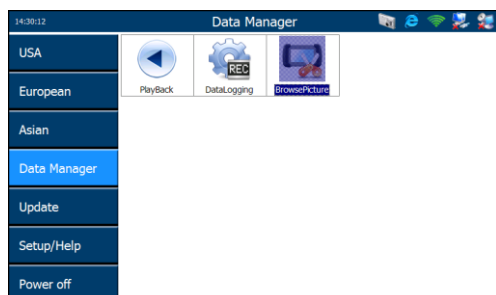


Figure 1.12: Data Manager Screen

This screen contains options for using the functions of playback, data logging and screen capture.

a. Playback Function

The Playback function allows you to view data recorded with various functions. It also allows you to save and delete recorded files. For details, refer to Chapter IV Data Manager & Printing on page 29.

When you click on the Playback icon from the Data Manager Screen (Figure 1.12 on page 6), the Playback screen appears, as shown below.

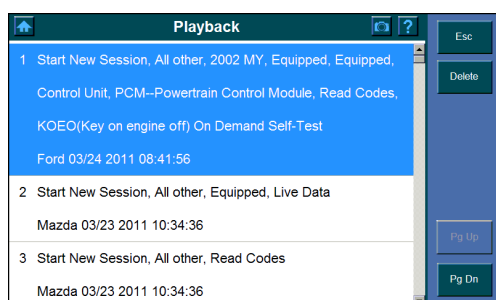


Figure 1.13: Playback Screen

b. Data Logging

Data logging is the process of recording events in order to provide a collection of data that can be used to diagnose vehicle communication problems. It can benefit the users by providing quick fix to software problems from the engineers.

When you click on the Data Logging icon from the Data Manager Screen (Figure 1.12 on page 10), the Data Logging screen appears, as shown below.

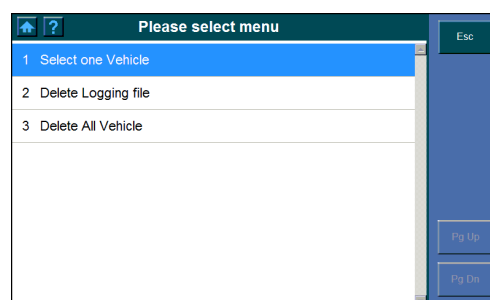


Figure 1.14: Data Logging Screen

For details, refer to Chapter IV Data Manager & Printing on page 56.

c. Screen Capture

The Screen Capture function is used to take an image by the scan tool to record the visible items displayed on the monitor. The screen shots can be used to demonstrate a particular problem a user might be having so that he can show the output to customer support engineers for help.

When you select the Screen Capture icon from the Data Manager screen (Figure 1.12 on page 6), the Screen Capture screen appears, as shown below.

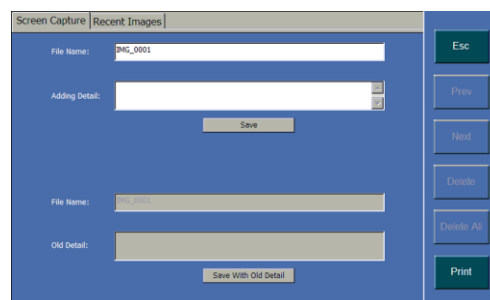


Figure 1.15: Screen Capture Screen

For details, refer to Chapter IV Data Manager & Printing on page 29.

6. Update

The Update function is used to connect the scan tool to the update website server and update the software if necessary.

When you click on Update from the Home Screen (Figure 1.8 on page 4), the Update screen appears, as shown below.

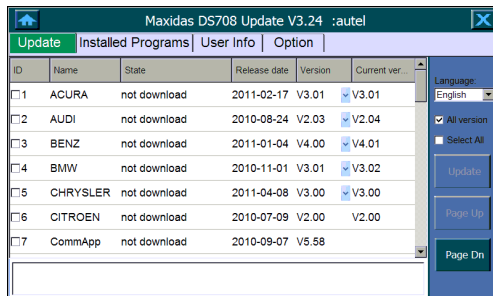


Figure 1.16: Update Screen

7. Setup/Help Functions

When you click on Setup/Help from the Home Screen (Figure 1.8 on page 4), the Setup/Help screen appears, as shown below:



Figure 1.17: Setup/Help Screen

This screen contains options for viewing information about the scan tool and adjusting default settings for the scan tool as follows:

- **Wi-Fi** - sets up the Wi-Fi network.
- **Network** - sets up the Ethernet network.
- **Unit** - sets the unit of measure.
- **Date/Time** - sets the date and time.
- **Language** - sets the default language for the scan tool software.
- **Backlight** - adjusts the backlight of the screen.
- **Beep** - sets the beep of the scan tool.
- **Touch** - calibrates the touch screen.
- **Remote Desk** - sets the remote desk.
- **About** - provides information about the scan tool, such as software version, operating system software version, hardware version, product serial No., etc.

For more information, refer to Chapter V System Setup on page 33.

2. Getting Started

2.1. Power up the Scan Tool

Before using the scan tool, you must provide power to the scan tool. There are two methods for providing power to the scan tool:

- AC/DC external power adapter
- Cable connection to vehicle

During vehicle testing, power for the scan tool is usually provided through the vehicle cable connection. When the scan tool is not connected to a vehicle, the scan tool can be powered with an AC/DC external power adapter.

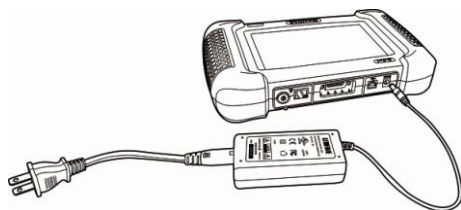


Figure 2.1: Power Adapter Connection to the Scan Tool

2.2. Adjust Default Settings

Use the Setup/Help functions to adjust default settings for the scan tool as follows:

1. Power up the scan tool, press the On/Off button to turn the scan tool on, and wait for the Home Screen to appear.
2. Click on Setup/Help to display the Setup/Help screen as shown below:

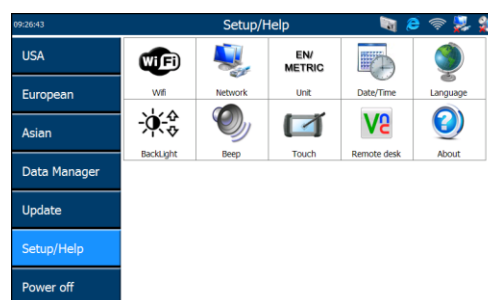


Figure 2.2: Setup/Help Screen

3. Select an item to adjust.
4. Follow any on-screen instructions.
5. For detailed instructions, refer to Chapter V System Setup on page 33.

2.3. Install the PC Software

MaxiDAS[®] allows you to realize some of its functions on a PC for convenience and better experience. To realize these functions on a PC, users are required to install certain software into the computer.

The Setup.exe software package is contained in the Compact Disc (CD) provided. The package includes the following software:

1. Remote Control software – to support view and/or control the scan tool from a PC.
2. Update Client – to update the scan tool software through computer.
3. PC Link – a printing service software.

Certain software and hardware environment is required for proper installation of Setup.exe:

1. Windows 7, or any higher versions
2. CD-ROM and mouse
3. At least 4G of space in the disk where the software is to be installed as a large space will be used temporarily during updating

Follow these steps to install the software:

1. Insert the CD into the CD-ROM of your computer.
2. An Install Shield Wizard window will pop up. Click on Next to continue.

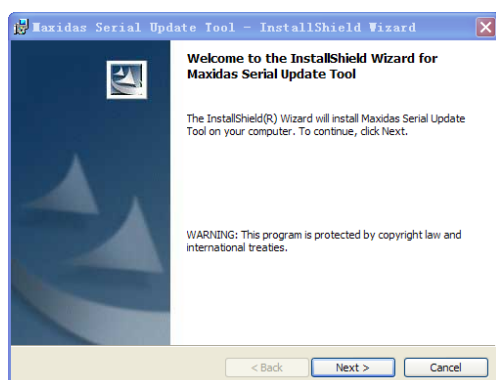


Figure 2.3: Install Shield Wizard Window

3. The next screen indicates the destination folder to install the software. Click on the Change button, select a folder, and click on Next to continue. Or, directly click on Next to continue.

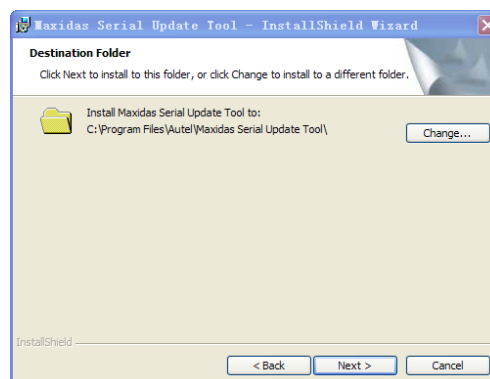


Figure 2.4: Change Destination Folder Window

4. Click on Install to begin the installation.

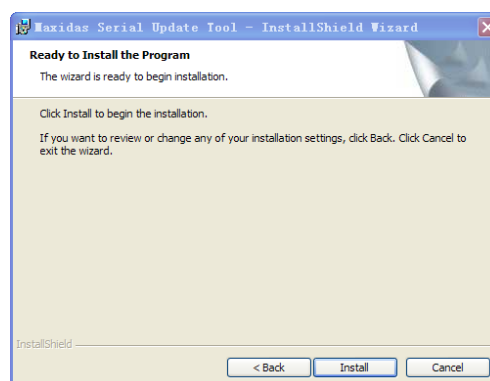


Figure 2.5: To Start Installation

5. Click on Finish to complete the installation process.

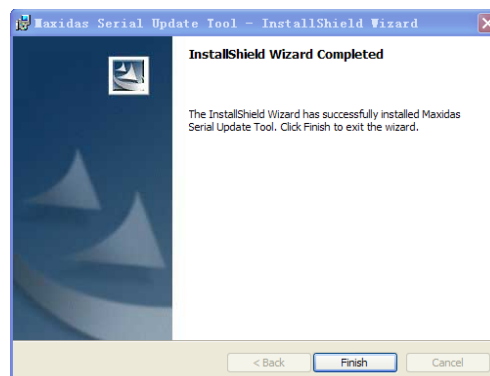


Figure 2.6: Installation Completes

2.4. Register the Tool

The scan tool can be applied to diagnosis for only 15 times before the tool is required to be registered on line. Testing for one same vehicle is defined as one time only if the tool is not powered off.

NOTE: No update can be carried out before the tool is registered.

To register the scan tool, please follow these steps:

1. Log on the website www.maxidas.com.
2. Click on the Update tool bar at the top of the screen, and then select User Register. Or, Click on the Updates column in the lower right corner of the screen, and select Register.
3. The screen of Register Information appears. Please read through the instructions, and click on Agree to continue.
4. Put in the Product Serial No. and Register Password, and click on “Next”.

NOTE: Please use the System/Help > About function to find out the Product Serial No. and Register Password. For details, please refer to the Section 5.11 About on page 38.

2.5. Test Startup and Vehicle Connection

Step 1: Connect the Cable.

Step 2: Enter the Vehicle information.

Step 3: Select the Diagnostic Function.

For details, please refer to Section 3.1 Test Startup and Vehicle Connection on page 11.

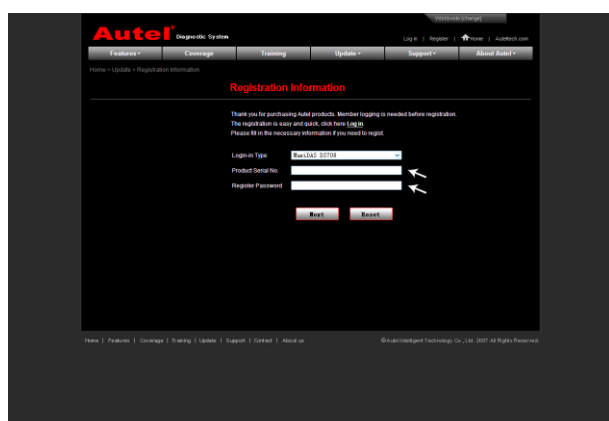


Figure 2.7: Registration Information Screen

5. Follow the instructions on screen to finish the registration.

3. Diagnostics Applications

3.1. Test Startup and Vehicle Connection

3.1.1. Step 1: Connect the Cable

The method used to connect the scan tool to a vehicle's DLC depends on the vehicle's configuration as follows:

- A vehicle equipped with an On Board Diagnostics Two (OBD II) vehicle management system supplies both communication and 12-volt power through a standardized J-1962 data link connection (DLC).
- A vehicle not equipped with an OBD II system supplies communication through a DLC connection and sometimes supplies 12-volt power through the cigarette lighter receptacle or a connection to the battery.

a. OBD II Vehicle Cable Connection

This type of connection generally requires the 15-pin main cable and an OBD II adapter. To connect the 15-pin main cable, please follow these steps:

- Locate the required OBD II adapter and connect it into the 15-pin male connector of the main cable.

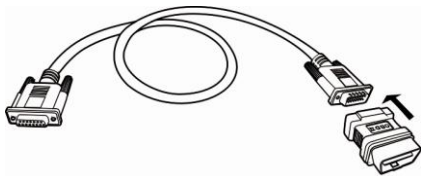


Figure 3.1: OBD II Adapter Connection to the DB15 Main Cable

- Connect the cable's 15-pin female adapter to the DB 15-pin port on the top of the scan tool. Finger tighten the connecting screws.

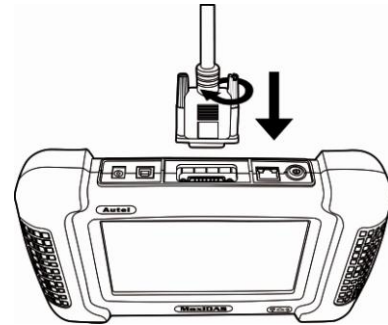


Figure 3.2: Main Cable Connection to the Scan Tool

NOTE: Extension cable can be used between the scan tool and the 15-pin main cable.

- Connect the cable's OBD II adapter into the vehicle's DLC, located under the vehicle dash.

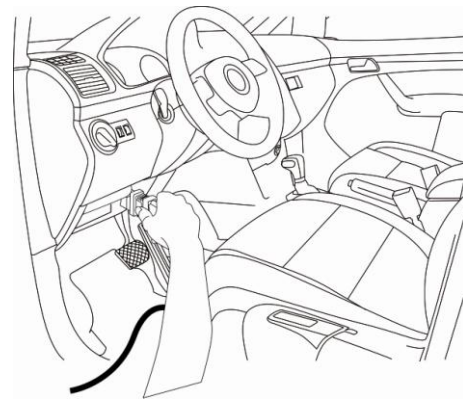


Figure 3.3: OBD II Cable Connection to Vehicle DLC

b. Non-OBD II Vehicle Cable Connection

There can be three possible conditions for Non-OBD II Vehicle Cable Connection:

- 1) DLC connection supplies both communication and power;
- 2) DLC connection supplies communication, and power is to be supplied via cigarette lighter connection;
- 3) DLC connection supplies communication, and power is to be supplied through cable connection to vehicle battery.

This type of connection generally requires the vehicle-specific OBD I adapter and the 15-pin main cable. To connect the DB15 main cable or another similar cable, please follow these steps:

1. Locate the required OBD I adapter and connect the adapter's 15-pin adapter to the cable's 15-pin male adapter.

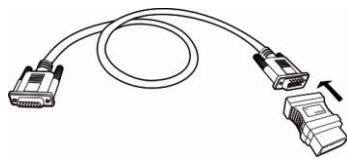


Figure 3.4: OBD I Adapter Connection to the DB15 Main Cable

2. Connect the cable's 15-pin female adapter to the DB15 port on the top of the scan tool. Finger tighten the connecting screws.

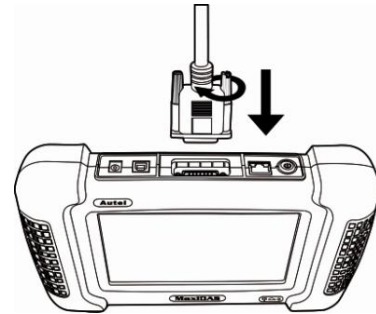


Figure 3.5: Main Cable Connection to the Scan Tool

3. Connect the main cable's OBD I adapter into the vehicle's DLC.

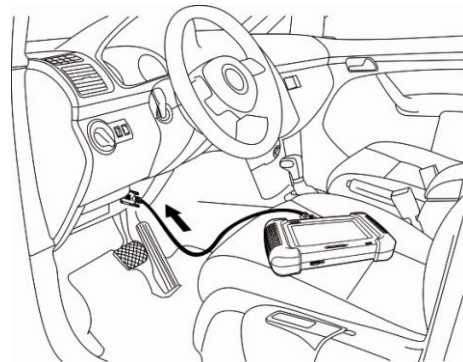


Figure 3.6: Main Cable Connection to Vehicle DLC

If the DLC connection does not supply power to the scan tool, connection to the cigarette lighter receptacle will be needed. Please follow these steps:

1. Connect the cigarette lighter with the scan tool.

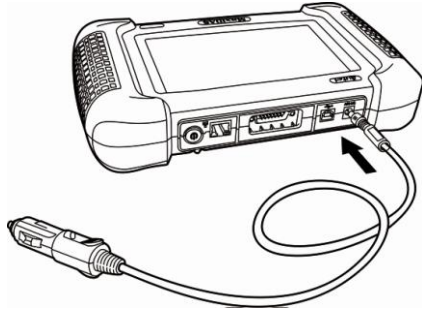


Figure 3.7: Cigarette Lighter Connection to the Scan Tool

2. Connect the cable's power plug into the vehicle's cigarette lighter receptacle.

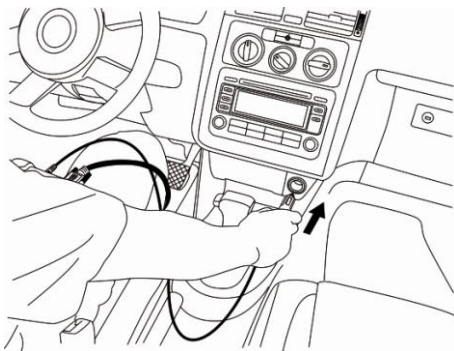


Figure 3.8: Plug into the Vehicle's Cigarette Lighter Receptacle

- ❏ **NOTE:** The vehicle's DLC is not always located under the dash as shown above.
- ❏ **NOTE:** Some adapters may have more than one adapter or may have test leads instead of an adapter. Whatever the case, make the required connections to the vehicle's DLC.

If the cigarette lighter connection does not provide power either, connection to the vehicle's battery is necessary. Follow these steps:

1. Connect the cigarette lighter to the clipper cable.

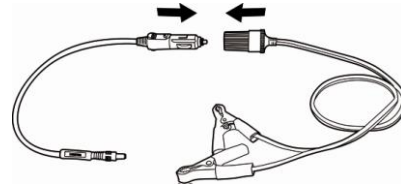


Figure 3.9: Connection between Cigarette Lighter and Clipper Cable

2. Connect the clipper cable to the vehicle's battery.

- ❏ **NOTE:** The vehicle's battery is usually located beside the engine.
- ❏ **NOTE:** Please connect the red clipper to the anode and the black clipper to the cathode.
- ⚠ **WARNING:** The clippers might be hot after use. Be careful not to be burnt.

You can conveniently obtain power supply through power adaptor connection to the scan tool if any power socket is within reach.

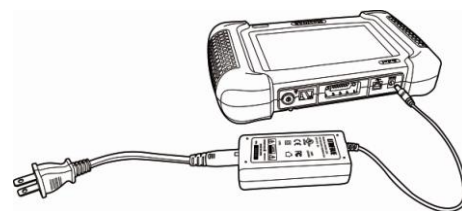


Figure 3.10: Power Adapter Connection to the Scan Tool

3.1.2. Step 2: Enter the Vehicle Information and Select the System to Be Tested

NOTE: The screens shown below in this User's Manual are examples. The screens actually appear vary by vehicle.

There are generally 2 ways to enter the vehicle information:

- 1) Selecting the correct option step by step.
- 2) Acquiring the VIN.

Use the following procedures to enter the Vehicle Information:

1. Press the On / Off button to turn the scan tool on and wait for the Home screen to appear.

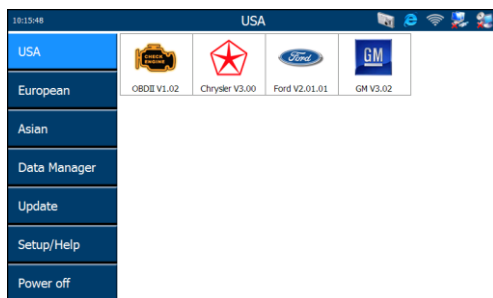


Figure 3.11: Home Screen

2. Select the vehicle manufacturer group. This displays the vehicle manufacturer screen.

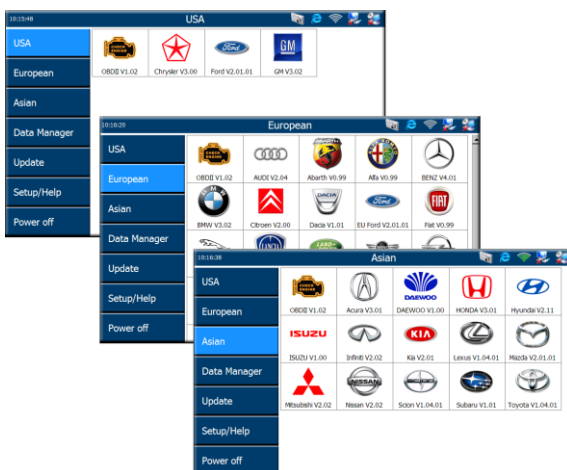


Figure 3.12: Vehicle Manufacture Group Screens

3. With the Vehicle Information screen displayed, you can enter the vehicle information either by selecting the correct option step by step or acquiring the vehicle VIN manually or automatically.

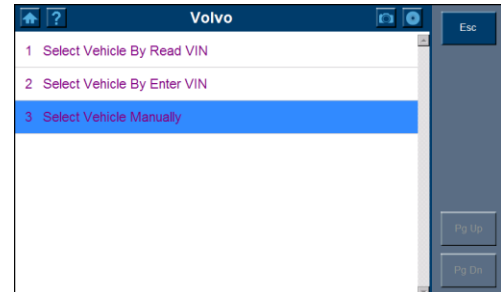


Figure 3.13: Selecting the Option or Acquiring VIN

NOTE: For some vehicles like VW, Audi, Seat, and Nissan, you do not need to enter the vehicle information before you select the diagnostic testing. For most others, you must enter the vehicle information before you can do any testing. For vehicles like BENZ, both selecting the option manually and acquiring the VIN are available for you to enter the vehicle information.

Do one of the following:

- To select the correct option step by step, go to step 4 and then step 6.
- To acquire the vehicle VIN manually or automatically, go to step 5 and then step 6.

4. To select the correct option step by step, do the following:
 - Select the vehicle manufacturer. This displays the options for you to choose from.

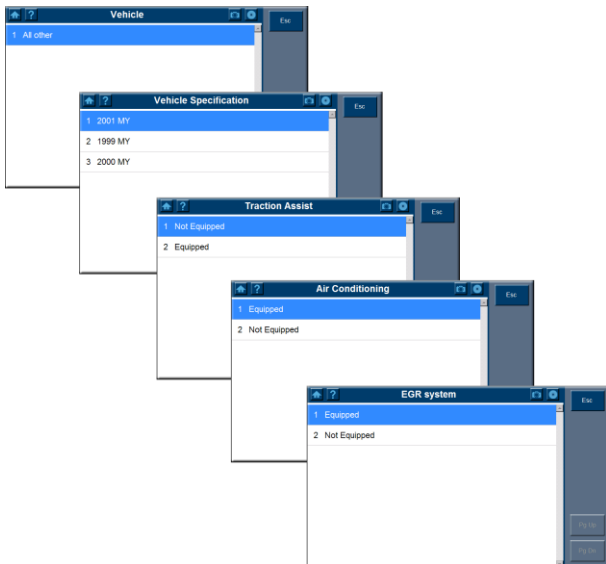


Figure 3.14: Selecting Vehicle Information Screens

- On each screen that appears, select the correct option. Do this until the complete vehicle information is entered, as shown in Step 6.
5. To acquire the vehicle VIN manually or automatically, do the following:
 - Select VIN acquisition. This displays the VIN acquisition screen, which may contain two options for you to choose: automatic acquisition or manual acquisition.
 - Select either automatic acquisition or manual acquisition to acquire the VIN.

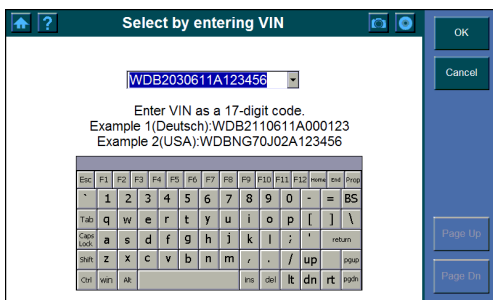


Figure 3.15: Manual VIN Acquisition Screen

6. After you have entered the vehicle information, the diagnostic testing selection screen will display as below:

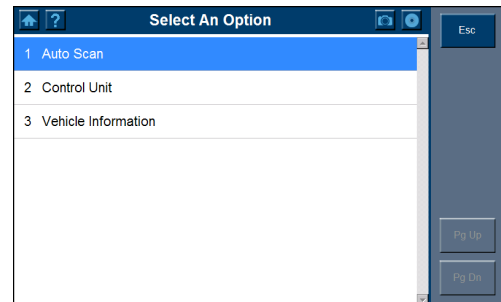


Figure 3.16: Diagnostic Testing Selection Screen

NOTE: The Auto Scan function will carry out an overall scan to check the status of all the systems on board the vehicle being tested. Clicking on Auto Scan will lead to retrieving the trouble codes in each system of the vehicle one by one. Auto Scan will take a few minutes.

NOTE: The Control Unit option will list down all the systems that might be available on the vehicle for you to select to test.

Do one of the following:

- To select Auto Scan, go to step 7 and then step 9.
- To select Control Unit, go to step 8 and then step 9.

7. Select Auto Scan, and the following screen will display:

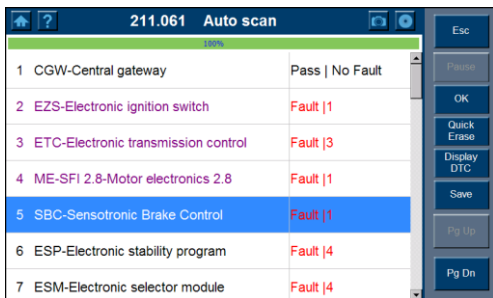


Figure 3.17: Auto Scan System Menu Screen

8. Select Control Unit, and the following screen will display:

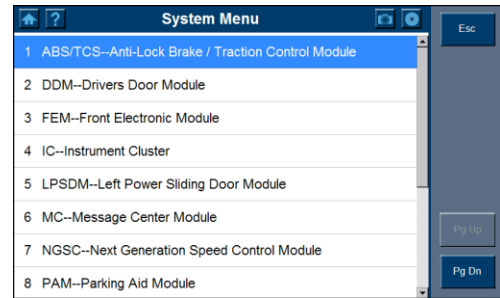


Figure 3.19: Control Unit System Menu Screen

NOTE: Users are allowed to check the details of each system, quickly erase DTC, and display DTC from the Auto Scan system menu screen. To select the functions on the right column of the screen, you need to Clicking once on a system for selection and Clicking once on the function key. To check the details of each system, you need to click twice on the system to enter. Clicking once on a system will not lead to any option.

9. Select a system to display the function menu and start testing.

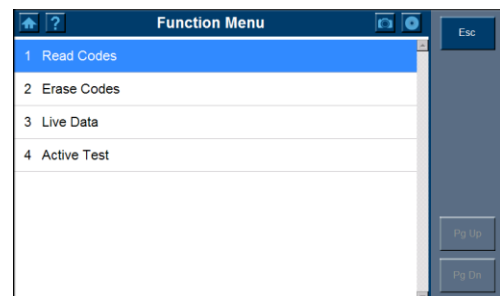


Figure 3.20: Function Menu Screen

NOTE: When exiting viewing a system, the scan tool will once again read the data and check the latest status of the system (i.e. a trouble code has been erased in the system). Wait for the reading process to complete before you make any selection, or the cursor will return to the system being read.

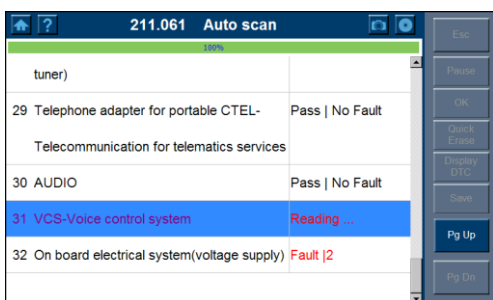


Figure 3.18: Reading Status Screen

NOTE: You can save the Auto Scan information as “Vehicle Record” so that you will not need to follow the vehicle selection process again on the same vehicle in later tests. For detailed instructions, please refer to the steps on page 17.

To save a vehicle record, please follow these steps:

1. Please follow the instructions above to display the Auto Scan menu.

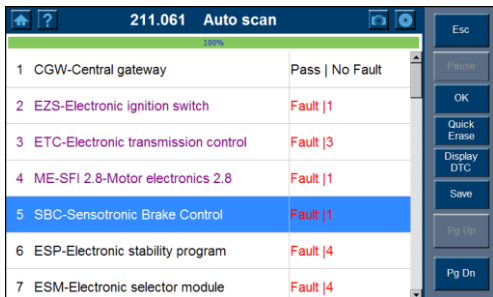


Figure 3.21: Auto Scan System Menu Screen

2. When the Auto Scan process is done, click on the Save button, and name the record on the Save Vehicle Record screen.

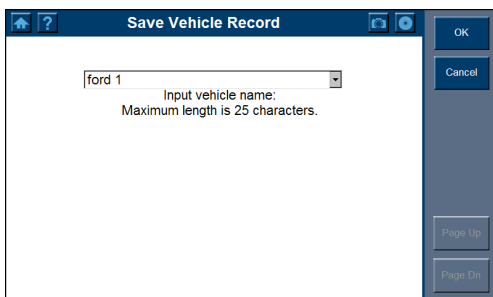


Figure 3.22: Save a Vehicle Record

3. To enter the diagnostic functions through the vehicle record option in future, please follow these steps:
 - Select Vehicle Data Record from the vehicle selection menu.

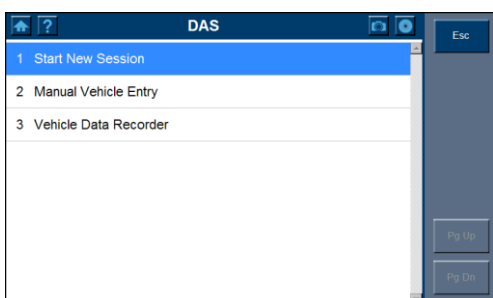


Figure 3.23: Vehicle Selection Menu Screen

- Click on the Vehicle Data Record option to enter the diagnostic menu directly.

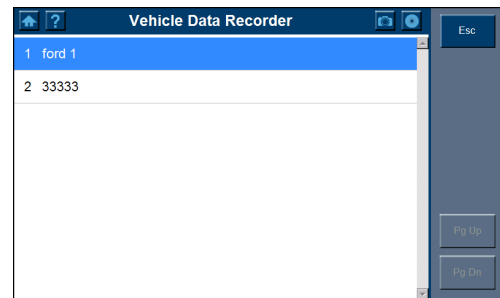


Figure 3.24: Select a Vehicle Record

3.1.3. Step 3: Select the Diagnostic Function

After you enter the vehicle information and select the system to be tested on the scan tool, select the option for the diagnostic function to perform:

- Select Diagnostic Trouble Codes to view and clear diagnostic trouble codes set by the vehicle ECU(s). For details, refer to Section 3.2 Diagnostic Trouble Codes on page 18.
- Select Live data to view real time streaming data of sensors and switches from the vehicle ECU(s). For details, refer to Section 3.3 Live data on page 19.
- Select Vehicle Information to view vehicle-specific information, such as TSBs, specifications, component locations, etc. For details, refer to Section 3.4 Vehicle Info on page 24.
- Select Active Test to perform tests on actuators so as to determine the integrity of the system or parts without parts removal. For details, refer to Section 3.5 Active Test on page 24.

3.2. Diagnostic Trouble Codes

The Diagnostic Trouble Codes functions allow you to read and clear diagnostic trouble codes (DTCs) from a vehicle.

3.2.1. Read Codes

The Read Codes procedure varies for each vehicle being tested. This section includes the following Read Codes procedures:

To read DTCs, please follow these steps:

- ✎ **NOTE:** Read Codes can be performed with both KOEO (Key On Engine Off) and KOER (Key On Engine Run).

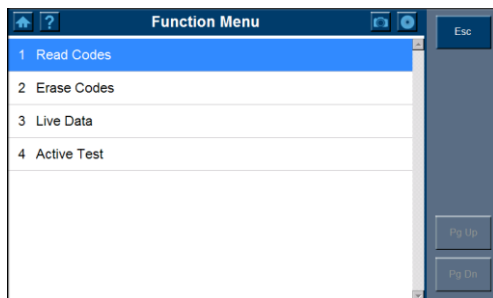


Figure 3.25: Function Menu Screen

1. With the Function Menu screen displayed, click on Read Codes. This displays the Read Codes menu screen.

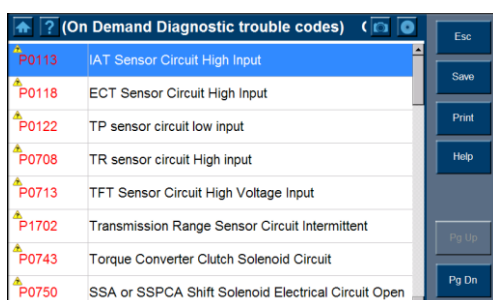


Figure 3.26: Read Codes Screen

2. Click on one of the options that may appear on the Read Codes screen.
 - Save - saves the code results for later review.
 - Print - prints the code results.

3. When finished viewing the list, click on the Esc button to return to previous screens.

- ✎ **NOTE:** When a Benz is being tested, DTC will be stored in two forms: Fault Codes and Event Memory. You may not see any trouble codes in the option of the Fault codes if the codes are actually stored in the Event memory.



Figure 3.27: Read Codes Example – Benz

3.2.2. Erase Codes

After reading and / or reviewing the diagnostic trouble codes, use the following steps to erase the codes from the vehicle. If Erase Codes is not an available menu option, consult the manufacturer's service manual for the correct "clear code" method.

- ✎ **NOTE:** This Erase Codes function clears the DTCs from the selected ECU or provides instructions for how to manually clear the codes from the ECU.

- ✎ **NOTE:** Before performing this procedure, make sure the vehicle's ignition key is in the On (Run) position with the engine off.

To Erase DTCs, please follow these steps:

1. With the Function Menu screen displayed, click on Erase Codes. This displays an instruction screen.
2. Follow the instructions on each screen that appears until the procedure is complete.
3. When finished, use the Esc button to return to previous screens.
4. Check the codes again. If any codes remain, repeat the Erase Codes steps.

3.3. Live Data

The Live Data function allows you to view live data from a vehicle's electronic control unit (ECU). This section describes how to use the Live Data function.

3.3.1 Basic Live Data Procedure

To use the Live Data function, please follow these steps:

1. Follow the instructions in Section 3.1 Test Startup and Vehicle Connection on page 11 to display the Function Menu screen.

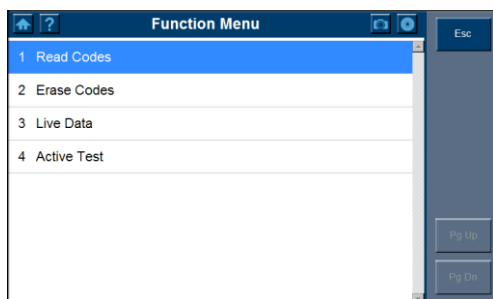


Figure 3.28: Function Menu Screen

2. Click on Live Data. This displays the Live Data screen.

NOTE: *Optionally, you can use Custom Live Data and select specific live data items for viewing. For details, refer to the Sub-Section 3.3.3 Custom Live Data on page 23.*

Text	Graph	Graph merge	Analog
Ignition Timing Advance for #1 Cylinder	0.0		°
Intake Air Temperature	39		°C
Air Flow Rate from Mass Air Flow Sensor	0.00		g/s
Absolute Throttle Position	16.1		%
Location of Oxygen Sensors	B1S12-B2S----		
Oxygen Sensor Output Voltage Bank 1-Sensor 2	0.460		V
Short Term Fuel Trim Bank 1-Sensor 2	99.2		%
OBD requirements to which vehicle is designed	OBD&OBDII		
Equivalence Ratio (lambda)(Bank 1-Sensor 1)	0.996		
Oxygen Sensor Current(Bank 1-Sensor 1)	-0.016		mA

Figure 3.29: Live data Screen

3. Notice the following about the Live Data screen:
 - Each line displays a data item.
 - You use the PG Up and PG Down Direction buttons to scroll through the page of data and use the stylus pen to select lines (one line at a time).
 - The screen's data updates as the software reads from the vehicle's ECU. Each update is called a "frame" of data.
 - You can stop and start the live readings at any time by clicking on the Pause button. When you stop the readings, the data "freezes" on the screen.
 - The function keys and options at the top and on the right of the screen allow you to perform several other functions on the screen. For details, refer to Sub-Section 3.3.2 Live Data Functions on page 20.
4. When you are finished using the screen, click on ESC to return to the Function Menu screen.

3.3.2 Live Data Functions

Functions Overview

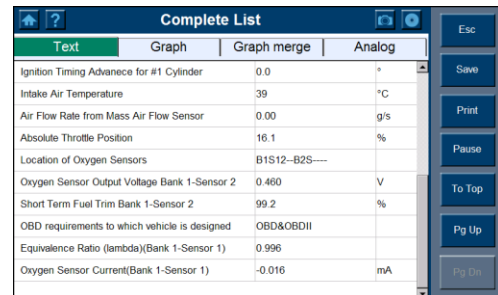
There are several functions you can use on the Live Data screen. Most of the functions are activated with the function buttons at the top and on the right of the screen.

These functions, described in detail on the next few pages, include the following:

- **Text/Graph / Graph Merge/Analog** – depending on the type of data on a line, changes the view of a selected line from digital to graphical or analog.
- **Record Data** – records the data for viewing again at a later time.
- **To Top** – moves a selected data item to the top of the screen.
- **Print** – prints the data currently displayed.

1. Text/ Graph / Graph Merge / Analog

The Text/ Graph / Graph Merge / Analog function allows you to change the display type for the data on the Live Data screen. Depending on the type of data on the screen, you can change the data from digital to a graphical or analog gauge display.



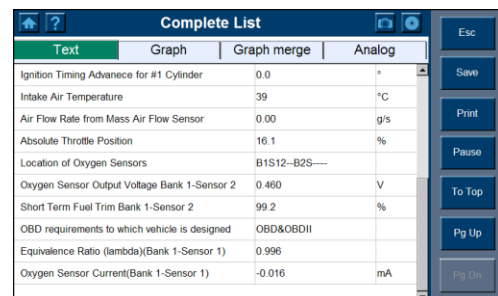
Text	Graph	Graph merge	Analog
Ignition Timing Advance for #1 Cylinder	0.0		°
Intake Air Temperature	39		°C
Air Flow Rate from Mass Air Flow Sensor	0.00		g/s
Absolute Throttle Position	16.1		%
Location of Oxygen Sensors	B1S12-B2S----		
Oxygen Sensor Output Voltage Bank 1-Sensor 2	0.480		V
Short Term Fuel Trim Bank 1-Sensor 2	99.2		%
OBD requirements to which vehicle is designed	OBD&OBDII		
Equivalence Ratio (lambda)(Bank 1-Sensor 1)	0.996		
Oxygen Sensor Current(Bank 1-Sensor 1)	-0.016		mA

Figure 3.30: Live Data Screen

To change the display, click on the Digital/ Graph / Graph Merge/ Analog function buttons.

a. About Digital Display

When the data is displayed as Digital, its reading is a word or a number as shown for all the lines in Figure 3.31 on page 20.



Text	Graph	Graph merge	Analog
Ignition Timing Advance for #1 Cylinder	0.0		°
Intake Air Temperature	39		°C
Air Flow Rate from Mass Air Flow Sensor	0.00		g/s
Absolute Throttle Position	16.1		%
Location of Oxygen Sensors	B1S12-B2S----		
Oxygen Sensor Output Voltage Bank 1-Sensor 2	0.480		V
Short Term Fuel Trim Bank 1-Sensor 2	99.2		%
OBD requirements to which vehicle is designed	OBD&OBDII		
Equivalence Ratio (lambda)(Bank 1-Sensor 1)	0.996		
Oxygen Sensor Current(Bank 1-Sensor 1)	-0.016		mA

Figure 3.31: Live Data Screen-Digital Display

You can change the display of the lines as follows:

- If the reading is a word (usually a switch reading), such as On, Off, OK, etc., the display can only be in word format.
- If the reading is a number (usually a sensor reading), such as 1.1 V, 23.3 Amps, etc., then you can change the data display to either a graph or an analog gauge.

b. About Graph Display

If the data reading is a number (usually a sensor reading), such as 14.4 V, 1.1 V, or 23 Amps, you can use the Graph/ Graph Merge function buttons to display the data in graph format. For example, see Figures 3.32 and 3.33.

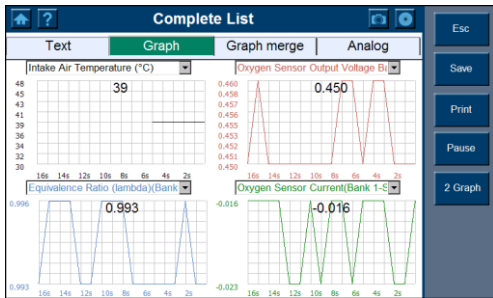


Figure 3.32: Live Data Screen-Graph Display

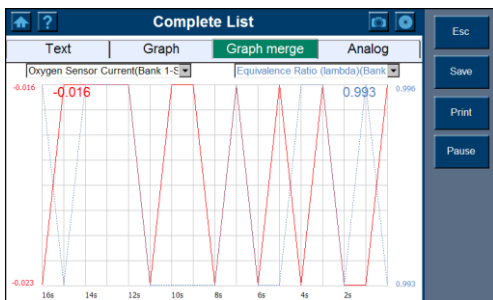


Figure 3.33: Live Data Screen-Graph Merge Display

c. About Analog Display

If the data reading can be displayed as a graph (see Figures 3.32 and 3.33), you can use the Analog function button to display the data as an analog gauge. Up to two gauges can be displayed on one screen.

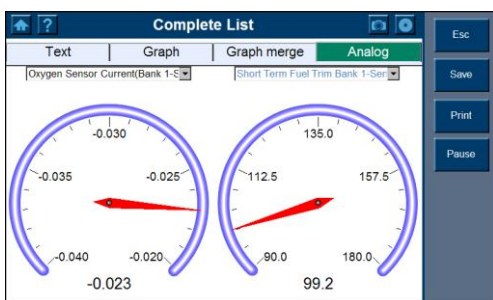


Figure 3.34: Live Data Screen - Analog Display

2. Record Data

The Record function allows you to save data files to the SD card and then use the Playback function to view the saved files.

NOTE: The length of time for each frame varies per vehicle. Generally, one frame of data is about 1/4 of a second, or 4 frames per second.

To record to SD Card, please follow these steps:

1. Follow the steps in the Sub-Section 3.3.1 Basic Live Data Procedure on page 19 to display the Live Data screen.

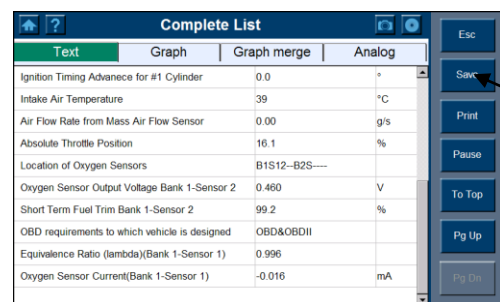


Figure 3.35: Live Data Screen - Record Function

NOTE: The recording will include all data lines in the list but not only the data viewable on the screen.

2. Click on the Save function button. This does the following:
 - Temporarily shades the Save function button.
 - Automatically records the frames of data that occur after clicking on the button.
- NOTE:** You can record any number of files as long as they fit on the free space on the SD card. To stop recording, just click on the Stop function button.
3. When the recording stops, continue viewing live data or use the ESC button to return to previous screens.
4. To view the saved data file, refer to Section 4.2 Playback on Page 29.

3. To Top

The To Top function allows you to move a selected data line to the top of the Live Data screen.

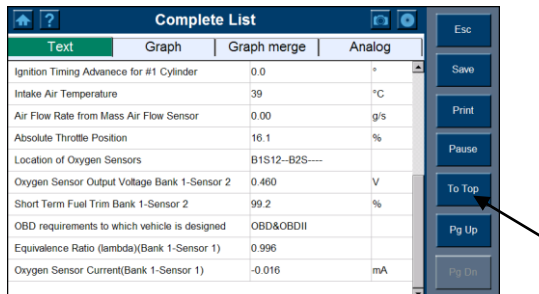


Figure 3.36: Live Data Screen-To Top Function

To move a data line to the top of the screen, please follow these steps:

1. With the Live Data screen displayed, select the line to move.
2. Click on the To Top function key. The selected line moves to the top of the screen.
3. Repeat steps 1 and 2 for each line to move.

4. Print

The Print function on the Live Data screen menu allows you to print the data currently displayed on the screen.

To print the data, please follow these steps:

NOTE: The scan tool must be connected to the Internet, and some operations shall be done on a PC. Refer to Section 4.5 Printing on page 32.

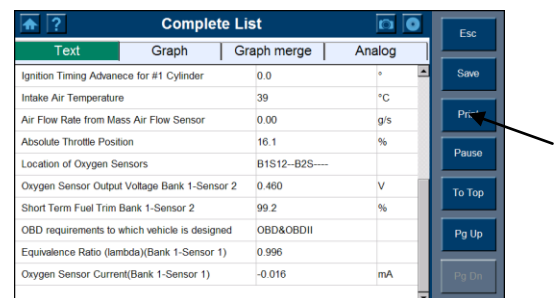


Figure 3.37: Live data Screen - Print Function

1. With the Live Data screen displayed, click on the Print button to select the Print function.
2. The message “Print the current frame of data?” appears on a Print screen. Click on the OK function key.
3. If a printer is not set up for printing, then a message “Can not connect to Printer Server!” appears on the screen.

3.3.3 Custom Live Data

The Custom Live Data function allows you to select specific data items to display on the standard Live Data screen.

To use the Custom Live Data function, please follow these steps:

1. Follow the instructions in Section 3.1 Test Startup and Vehicle Connection on page 11 to display the Function Menu screen.

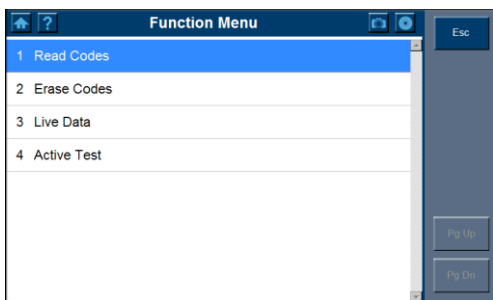


Figure 3.38: Function Menu Screen

2. Click on Custom Live Data. This displays the Custom Live Data selection screen.

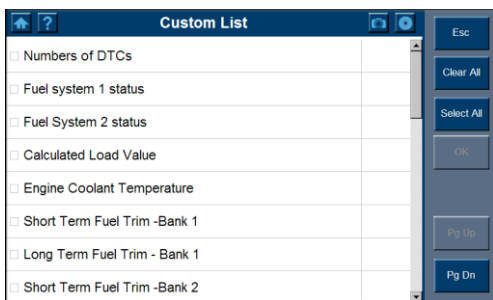


Figure 3.39: Custom Live Data Selection Screen – before Selection

3. Select the data items to include in the Live Data display as follows:
 - Click on the data item to select. A check mark appears in the box on the left side of the item.
 - Use the Pg Up or Pg Dn keys to display the data item if the desired data items are not on the current display.

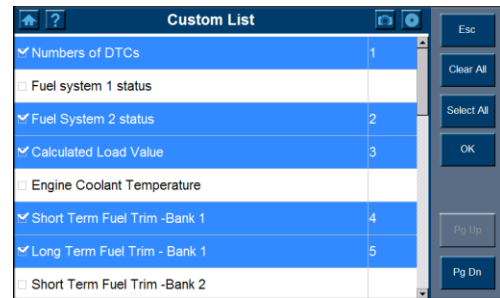


Figure 3.40: Custom Live Data Selection Screen - after Selections

NOTE: To deselect an item, select the item again by clicking on the item. Optionally, use the Select All and Clear All function keys to select or deselect all of the items at once.

4. When finished selecting data items, click on the OK function key to display the selected items on the Custom Live Data screen.

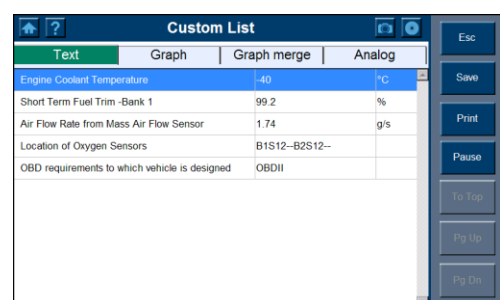


Figure 3.41: Custom Live Data Screen

3.4 Vehicle Information

The Vehicle Information function allows you to view vehicle-specific information for Specifications, System Type and other Identification.

To access the Vehicle Info functions, please follow these steps:

1. Follow the instructions in Section 3.1 Test Startup and Vehicle Connection on page 11 to display the Function Menu screen.
2. Click on Vehicle Information to display the Vehicle Information screen.

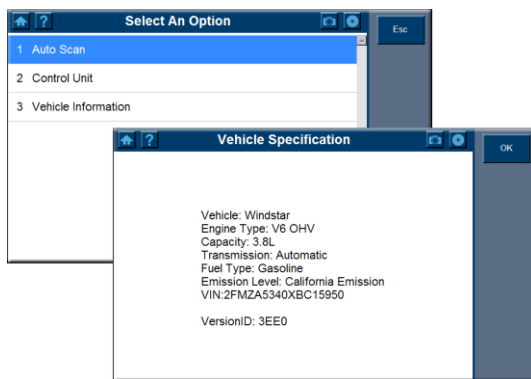


Figure 3.42: Function Menu and Vehicle Info Screens

3. View the Vehicle information as displayed.

3.5 Active Test

During an active test, a diagnostic tester is used for outputting commands to the ECU in order to drive the actuators. This test determines the integrity of the system or parts by monitoring the operation of the actuators or by reading the engine ECU data.

Performing the Active Tests using the hand-held tester allows the relay, VSV, actuator and etc to operate without parts removal. Performing the Active Tests as the first step of troubleshooting is one method to shorten labour time.

NOTE: *Active Test is also known as “Actuator Test”, “Actuation Activation”, and etc.*

To carry out an Active Test, please follow these steps:

1. Follow the instructions in Section 3.1 Test Startup and Vehicle Connection on page 11 to display the Function Menu screen.

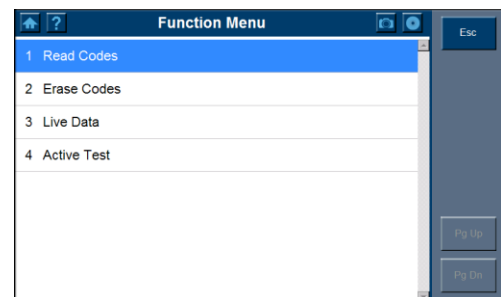


Figure 3.43: Function Menu Screen

2. Select Active Test and a list of possible tests appears.

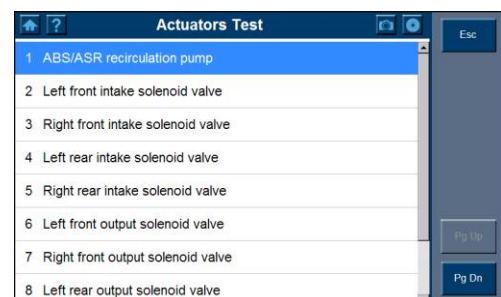


Figure 3.44: Active Tests List Screen

3. Select a test, and the scan tool will display an information screen of “Are you sure you want to start?” Click on Start to continue or Esc to exit.
4. The scan tool may display information during and after the test. The information varies by vehicle.

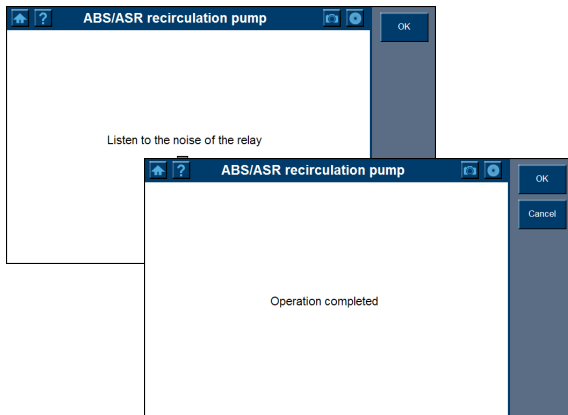


Figure 3.45: Active Test Information Screens

i **IMPORTANT:** Make sure that the components to be tested are not physically damaged and are well assembled.

⚠ **WARNING:** Please stop repairing the components to be tested before the test starts and keep a certain distance during the test.

3.6 Generic OBD II Functions

The OBD II Diagnostics function is a fast-access option that allows you to carry out a quick test on the engine system of OBD II vehicles.

3.6.1. General Procedures

To access the OBDII diagnostics functions, please follow these steps:

1. Power up the screen to display the home screen (Figure 1.8 on page 4).
2. Click on the OBD II icon. The scan tool displays a System Status screen that describes the basic status of the vehicle.
3. Click on OK, and wait for the Diagnostic Menu to appear.

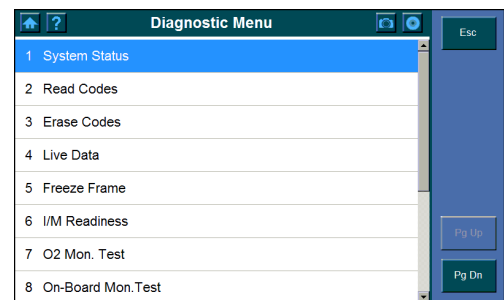


Figure 3.46: OBD II-Diagnostic Menu Screen

4. Select a function by clicking on it once.

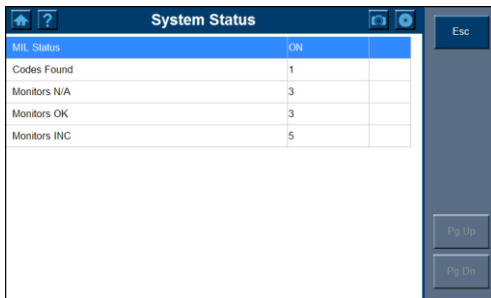
- **System Status**
- **Read Codes**
- **Erase Codes**
- **Live Data**
- **Freeze Frame**
- **I/M Readiness**
- **O2 Mon. Test**
- **On-Board Mon. Test**
- **Component Test**
- **Vehicle Info.**
- **Modules Present**
- **DTC Lookup**

📌 **NOTE:** Some functions are supported only on certain vehicle makes.

3.6.2. Functions Description

1. System Status

The System Status function allows you to view system status of the vehicle being tested.



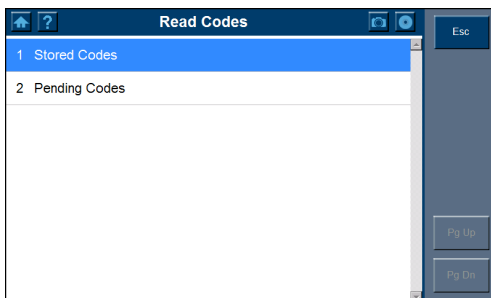
System Status	
MIL Status	ON
Codes Found	1
Monitors N/A	3
Monitors OK	3
Monitors INC	5

Figure 3.47: OBD II-System Status Screen

2. Read Codes

Reading Codes can be done with the key on engine off (KOEO) or with the key on engine running (KOER). This function allows you to view the stored codes and pending codes detected.

The data can be saved to the SD card, or be printed.



Read Codes	
1	Stored Codes
2	Pending Codes

Figure 3.48: OBD II-Read Codes Screen

3. Erase Codes

The Erase Codes function allows you to delete diagnostic trouble codes, Freeze Frame data and manufacturer specific enhanced data from the vehicle's on-board computer, and resets the I/M Readiness Monitor Status for all vehicle monitors to Not Ready or Not Complete status.

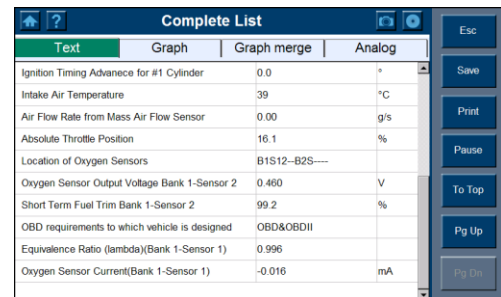
This function is performed with key on engine off (KOEO). Do not start the engine.

4. Live Data

The Live Data function allows you to view real time PID data from ECU.

Live data can be displayed in four styles – text, graph, graph merge, and analog gauge.

The data can be saved to the SD card, or be printed.



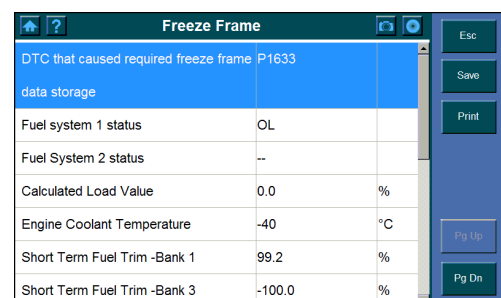
Text	Graph	Graph merge	Analog
Ignition Timing Advance for #1 Cylinder	0.0		°
Intake Air Temperature	39		°C
Air Flow Rate from Mass Air Flow Sensor	0.00		g/s
Absolute Throttle Position	16.1		%
Location of Oxygen Sensors	B1S12-B2S----		
Oxygen Sensor Output Voltage Bank 1-Sensor 2	0.460		V
Short Term Fuel Trim Bank 1-Sensor 2	99.2		%
OBD requirements to which vehicle is designed	OBD&OBDII		
Equivalence Ratio (lambda)(Bank 1-Sensor 1)	0.996		
Oxygen Sensor Current(Bank 1-Sensor 1)	-0.016		mA

Figure 3.49: OBD II-Live Data Screen

5. Freeze Frame

Freeze Frames function allows you to view data stream “snapshots” automatically recorded by the ECU that show actual data values at the time when DTC(s) occurred.

The data can be saved to the SD card, or be printed.



Freeze Frame	
DTC that caused required freeze frame P1633	
data storage	
Fuel system 1 status	OL
Fuel System 2 status	--
Calculated Load Value	0.0 %
Engine Coolant Temperature	-40 °C
Short Term Fuel Trim -Bank 1	99.2 %
Short Term Fuel Trim -Bank 3	-100.0 %

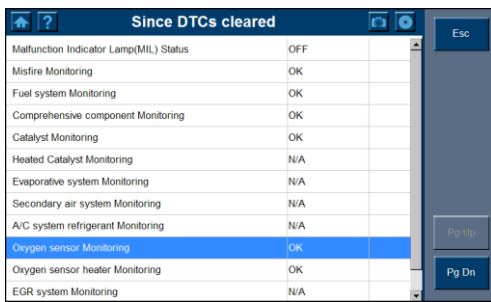
Figure 3.50: OBD II-Freeze Frame Screen

6. I/M Readiness

I/M Readiness function is used to check the operations of the emission systems. It is an excellent function to use prior to having a vehicle inspected for compliance to a state emissions program.

Some latest vehicle models may support two types of I/M Readiness tests:

- A. Since DTCs Cleared - indicates status of monitors since the DTCs are erased.
- B. This Drive Cycle - indicates status of monitors since the beginning of the current drive cycle.



Since DTCs cleared	
Malfunction Indicator Lamp(MIL) Status	OFF
Misfire Monitoring	OK
Fuel system Monitoring	OK
Comprehensive component Monitoring	OK
Catalyst Monitoring	OK
Heated Catalyst Monitoring	N/A
Evaporative system Monitoring	N/A
Secondary air system Monitoring	N/A
A/C system refrigerant Monitoring	N/A
Oxygen sensor Monitoring	OK
Oxygen sensor heater Monitoring	OK
EGR system Monitoring	N/A

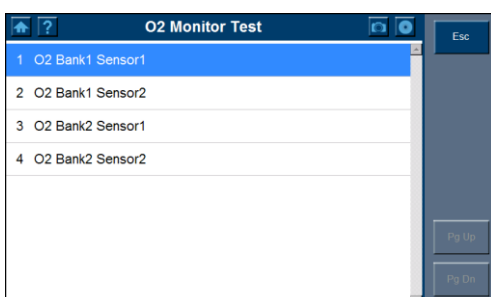
Figure 3.51: OBD II-I/M Readiness Screen

7. O2 Mon. Test

The O2 Monitor Test function allows retrieval and viewing of O2 sensor monitor test results for the most recently performed tests from the vehicle's on-board computer.

The O2 Monitor Test function is not supported by vehicles which communicate using a controller area network (CAN). For O2 Monitor Test results of CAN-equipped vehicles, please refer to "On-Board Mon. Test".

The data can be saved to the SD card, or be printed.

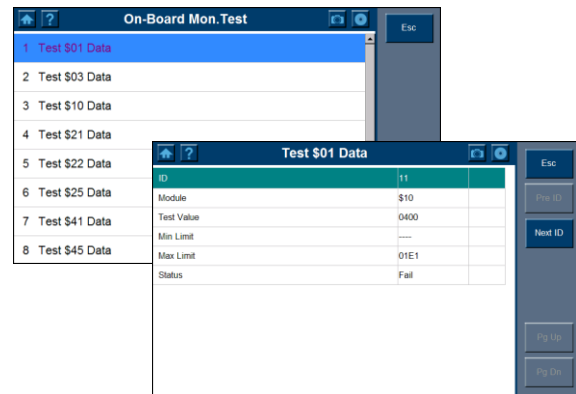


O2 Monitor Test	
1	O2 Bank1 Sensor1
2	O2 Bank1 Sensor2
3	O2 Bank2 Sensor1
4	O2 Bank2 Sensor2

Figure 3.52: OBD II-O2 Mon. Test Screen

8. On-Board Mon. Test

The On-Board Monitor Test function allows you to view the results of On-Board Monitor Tests. The tests are useful after servicing or after erasing a vehicle's control module memory.



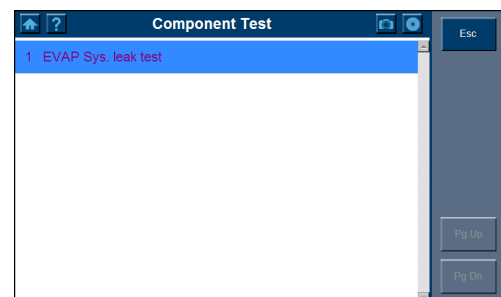
On-Board Mon. Test	
1	Test \$01 Data
2	Test \$03 Data
3	Test \$10 Data
4	Test \$21 Data
5	Test \$22 Data
6	Test \$25 Data
7	Test \$41 Data
8	Test \$45 Data

Test \$01 Data	
ID	11
Module	\$10
Test Value	0400
Min Limit	---
Max Limit	01E1
Status	Fail

Figure 3.53: OBD II-On Board Mon. Test Screen

9. Component Test

The Component Test function allows you to command the vehicle's on-board computer to start a leak test for the vehicle's EVAP system.



Component Test	
1	EVAP Sys. leak test

Figure 3.54: OBD II-Component Test Screen

10. Vehicle Info.

The Vehicle Information function enables retrieval of Vehicle ID Number (VIN), Calibration ID (CIN), Calibration Verification Number (CVN) and In-use Perform Track on 2000 and newer vehicles that support Mode 9.

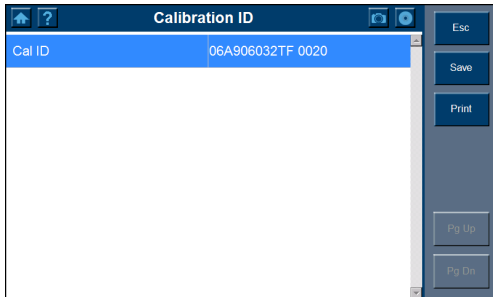


Figure 3.55: OBD II-Vehicle Info. Screen

12. DTC Lookup

The DTC Lookup function allows you to search for definitions of DTCs stored in built-in DTC library.

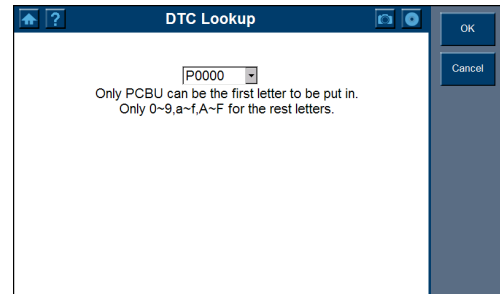


Figure 3.57: OBD II-DTC Lookup Screen

11. Modules Present

The Modules Present function allows you to view module IDs and communication protocols of OBD II modules in the vehicle.



Figure 3.56: OBD II-Modules Present Screen

4. Data Manager & Printing

The Data Manager functions allow you to playback saved data recordings, as well as accessing the programs of Data Logging and Screen Capture.

4.1. General Procedures

To access the Data Manager functions, please follow these steps:

1. Ensure that the scan tool is connected to a power source and the power LED light is illuminated.
2. Press the On/Off button to turn on the scan tool, wait for the home screen to appear.
3. Click on Data Manager and wait for the Data Manager screen to show.

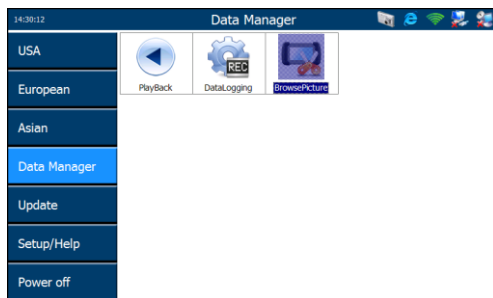


Figure 4.1: Data Manager Screen

4. Select a function.

- **Playback**
- **Data Logging**
- **Screen Capture**

NOTE: The amount of files that can be saved in Data Manager depends on the space available in the SD card.

4.2. Play Back

The Playback function allows you to view data saved. It also allows you to save, delete, and print recorded files.

1. Follow the instructions in the General Procedures on page 29 to display the Data Manager screen.
2. Click on the Playback icon and wait for the Playback screen to show.

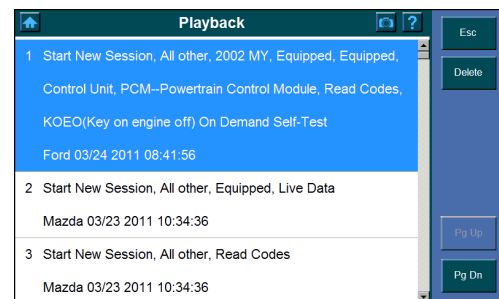


Figure 4.2: Playback Screen

3. Select the data you wish to view by clicking on it.
4. Click on Esc to return to the previous screen after viewing the data.
5. To delete a data, click on the Delete button on the Playback screen, and a Delete Screen will display. Select the data to delete, and click on OK.
6. To print a data, please refer to Section 4.5 Printing on page 32.

4.3. Data Logging

The built-in data logger records communication data and ECU info when tests fail. The data could be sent to the technical center via the Internet. A fix file could be transferred back to the technician, usually within 48 hours. Later, an update will be created and posted for all users to download.

To record and send the logging file, please follow these steps:

1. Make sure that the scan tool is connected to the Internet. If not, please refer to the Section 5.2 Wi-Fi on page 33 or the Section 5.3 Network on page 34.
2. Click on the disc icon in the upper right corner to display the data logging menu during a diagnostic process when necessary.

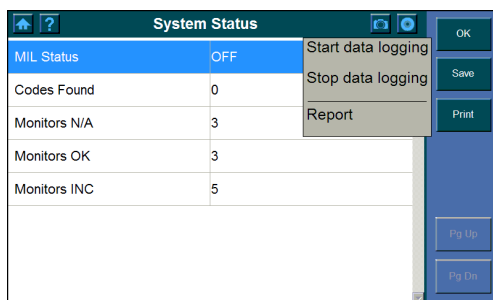


Figure 4.3: Data Logging Menu

3. Click on “Start data logging”, a dialog box will display.



Figure 4.4: Data Logging Dialog Box

4. Use the soft keyboard to put in File Name and File detail, and click on OK. The scan tool will start to record the communication process with the vehicle being tested.

NOTE: For better solution of your problems, please put detailed descriptions of the problems encountered in the File Detail box.

5. Click on the disc icon in the upper right corner to display the data logging menu, and click on “Stop data logging” to stop recording.
6. Do one of the following:
 - Click on “Report” from the data logging menu to enter the Data Logging screen. Or,
 - Follow the instructions in the General Procedures on page 29 to display the Data Manager screen. Click on the Data Logging icon to enter the Data Logging screen.

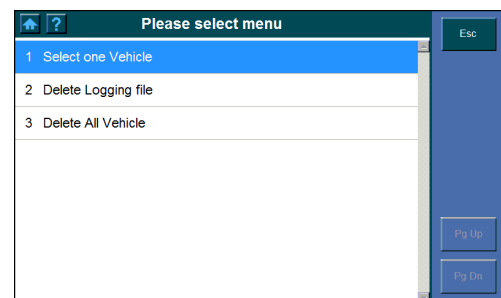


Figure 4.5: Data Logging – Select Data

7. Click on “Select one Vehicle”.
8. Select a log file. If the log file has been recorded during an OBD II quick test, please select EOBD.
9. Select the data logging file you saved, and click on the Send button to send it to the Autel technical center.
10. Click on Esc to return to the previous screen.

To delete a data logging file, please follow these steps:

1. Follow the instructions in the General procedures on page 29 to display the Data Manager screen.
2. Click on the Data Logging icon to enter the Data Logging screen.
3. To delete all data logging files:
 - Click on “Delete All Vehicles”.
 - An information screen of “Are you sure to delete all vehicles?” displays.
 - Click on Yes to delete all data logging files reserved, or click on No to exit.
4. To delete one or some of the data logging files:
 - Click on “Delete Logging File”.
 - Select a test.
 - Select the file(s) you want to delete and click on OK.
 - An information screen of “Are you sure to delete?” displays. Click on Yes to confirm.

4.4. Screen Capture

The Screen Capture function allows you to take a picture of the test screen to record visible items displayed on the monitor, and to print the pictures taken.

To take a picture, please follow these steps:

1. Click on the camera icon in the upper right corner of the screen if you want to take a picture of the displaying screen.

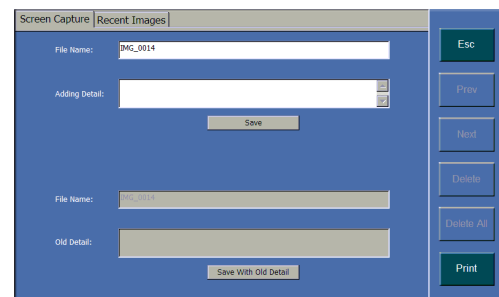


Figure 4.6: Screen Capture Screen

2. Click on the File Name space and wait for the soft keyboard to pop up; use the soft keyboard to modify the file name, if necessary.
 - ✎ **NOTE:** The “Adding Detail” area can be left blank.
3. Click on the Adding Detail space and wait for the soft keyboard to pop up; use the soft keyboard to put in explanations to the picture.
4. Click on Save to save the picture. Detailed description of the last picture saved will be shown in the Old Details space. Please click on “Save with Old Detail” to save the picture with the same descriptions as the last picture.
5. The scan tool displays an information screen indicating the file name and storage location.
6. Click on Esc to return to the Data Manager screen.
 - ✎ **NOTE:** To print the picture, please refer to Section 4.5 Printing on page 32.

To view a previously taken picture, please follow these steps:

1. Follow the instructions in the General Procedures on page 29 to display the Data Manager screen, and click on the Screen Capture icon to access the Screen Capture program. Or,
Click on the camera icon in the upper right corner of the screen to access the Screen Capture Program.
2. Click on the Recent Images function bar for the screen to show as below.

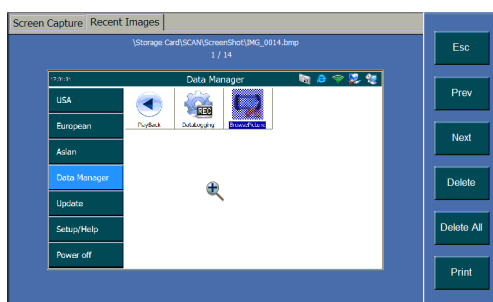


Figure 4.7: Screen Capture – Recent Images

3. Click on the screen to zoom in the picture to full screen and click again to zoom out.
4. Use the Prev. or Next buttons to view the previous or next pictures.
5. Use the Delete button to delete the picture being displayed, or use the Delete All button to delete all pictures stored.
6. Click on Esc to return to the Data Manager menu.

To print the picture, please refer to the Section 4.5 Printing on page 32.

4.5. Printing

The printing function allows you to print data and pictures.

1. Ensure that the print service software has been properly installed to your PC. Please refer to Section 2.3 Install the PC Software on page 9.
2. Ensure that the scan tool has been connected to the Internet. Please refer to Section 5.2 Wi-Fi on page 33 or Section 5.3 Network on page 34.
3. Run the print service software on your computer.
4. Click on the Print function key on the screen of the scan tool.
NOTE: A Print function key appears in the right column of the screen if the data is printable.
5. Select a computer on the scan tool if two or more computers are running the print service software within the network.
6. Click on the Print Server tab on the top of print service software on the computer and wait for the printing file to load.

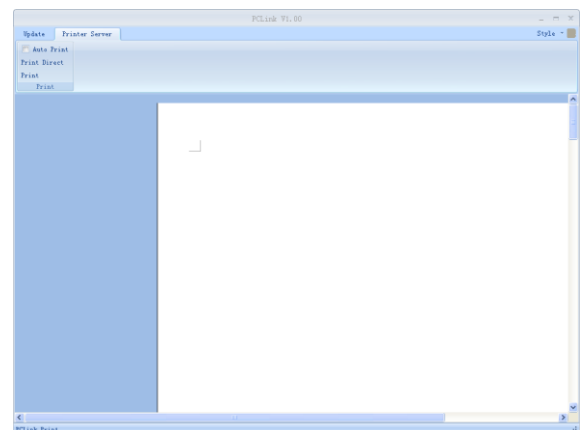


Figure 4.8: Print Service Software Window

7. Click on the Print button in the Print Service Software window to print.

5. System Setup

The System Setup functions allow you to adjust default setting and view information about MaxiDAS® DS708.

5.1. General Procedures

To access the System Setup functions, please carefully follow the steps below:

1. Ensure that the scan tool is connected to a power source and the power LED light is illuminated.
2. Press the ON/OFF button to turn on the scan tool and wait for the home screen to appear.
3. Click on Setup/Help. This displays the Setup/Help screen.

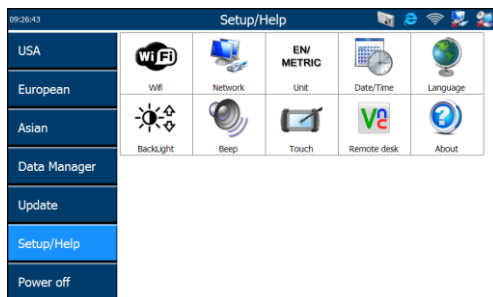


Figure 5.1: Setup/Help Screen

4. Select the item to adjust.
5. Refer to the following sections:
 - **Wi-Fi**
 - **Network**
 - **Unit**
 - **Date/Time**
 - **Language**
 - **Backlight**
 - **Beep**
 - **Touch**
 - **Remote Desk**
 - **About**
 - **Printing**

5.2. Wi-Fi

The Wi-Fi function allows you to use wireless network connection on the scan tool.

1. Follow the instructions in the General Procedures on page 33 to display the Setup/Help screen.
2. Click on the Wi-Fi icon and wait for the WLAN Settings window to pop up.

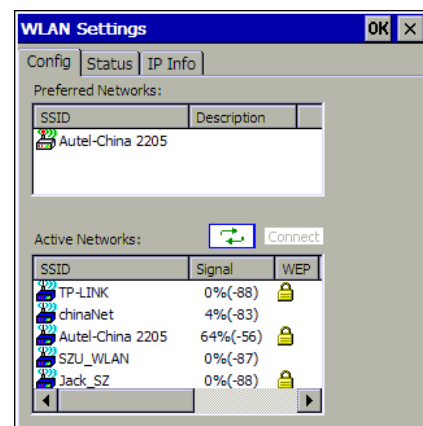



Figure 5.2: WLAN Settings Window

3. Select the network you want to connect in the Active Networks column, and click on the Connect button.
4. Wait for an IP address to be assigned.
5. Click on OK to save your configuration and exit.

✎ **NOTE:** If no network is listed in Preferred Networks column or Active Networks column, click on the  button to refresh the screen. If refreshing does not help, you will have to add a hidden wireless network manually.

To add a hidden wireless network, please do the following:

- Follow the step 1 and step 2 above in the Section 5.2 on page 33 to display the WLAN Settings window.
- Click on the IP Info function bar and then on the Config button. Wait for a WLAN Settings window to pop up.

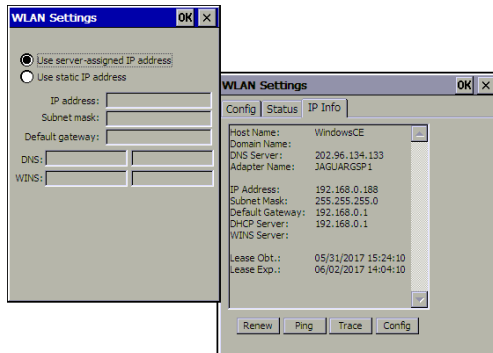


Figure 5.3: To Add a Wireless Network Manually

- Select “Use static IP address”, and fill in the blanks.
- Click on OK.

To remove a wireless network, arrange the order of each network, or edit wireless network information from the list of networks under Preferred Networks, please do the following:

- Select the wireless network, click on it and hold for a few seconds and wait for the action menu to pop up.
- Select the action which you would accomplish.

5.3. Network

The Network function allows you to adjust network setting.

1. Properly insert the network cable into the RS 232 Serial Port of the scan tool.
2. Follow the instructions in the General Procedures on page 33 to display the Setup/Help screen.
3. Click on the Network icon and wait for “DM9000A/9010 ISA Fast Ethernet Adapter Settings” window to pop up.

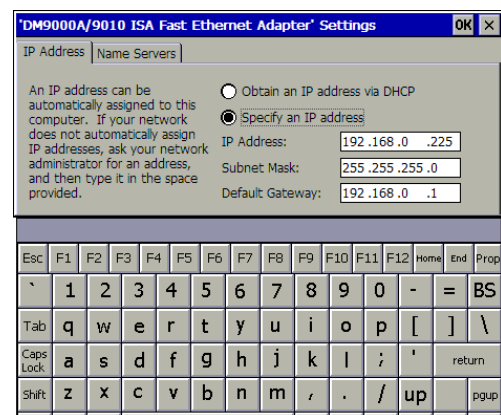


Figure 5.4: Network

4. Do one of the followings to set up IP address:
 - If the local network will automatically assign an IP address to a device, select “Obtain an IP address via DHCP”.
 - If IP address is not assigned automatically, select “Specify an IP address”, obtain the address from the network administrators and enter it in the space.
5. Click on OK to save your configuration and exit.

5.4. Unit

The Unit function allows you to adjust units of measurement.

1. Follow the instructions in the General Procedures on page 33 to display the Setup/Help screen.
2. Click on the Unit icon and wait for Unit window to pop up.
3. Select Metric for the metric units of measure or select English for the English units of measure.

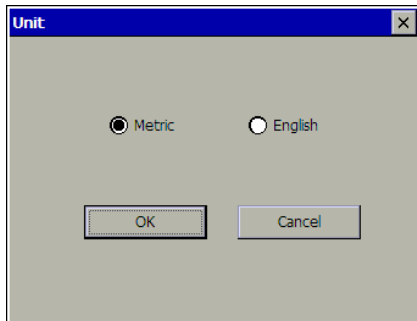


Figure 5.5: Unit

4. Click on OK to save your configuration and exit or click Cancel to exit without saving changes.

5.5. Date/Time

The Date/Time function allows you to set time and date.

1. Follow the instructions in the General Procedures on page 33 to display the Setup/Help screen.
2. Click on the Date/Time icon and wait for the Date/Time window to pop up.
3. Set the time as hours, minutes, and seconds (24 hour clock) in the Time Dialog Box.
4. Set the Date as month, day, and year in the Date Dialog Box.
5. Select Date Format to change the format of date.

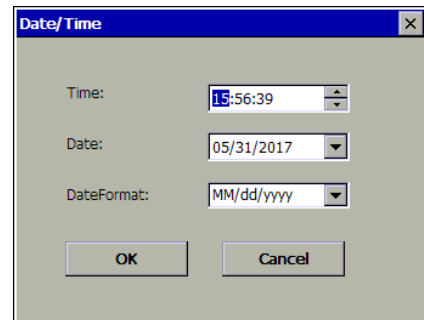


Figure 5.6: Date/Time

6. Click on OK to save your configuration and exit or click Cancel to exit without saving changes.

5.6. Language

The Language function allows you to adjust language settings.

1. Follow the instructions in the General Procedures on page 33 to display the Setup/Help screen.
2. Click on the Language icon and wait for the Language window to pop up.
3. Click on a language.

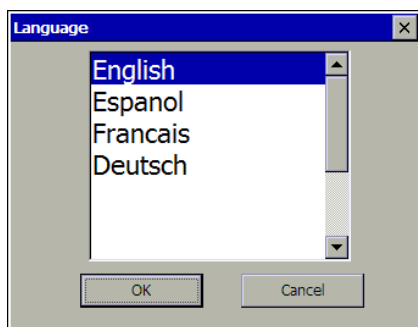


Figure 5.7: Language

4. Click on OK to save your configuration and exit or Cancel to exit without saving changes.

5.7. Backlight

The Backlight function allows you to adjust the screen backlighting.

NOTE: *Temperature or lighting may affect the brightness of the scan tool screen. If necessary, use the Contrast Adjust function to adjust the screen for working conditions.*

1. Follow the instructions in the General Procedures on page 33 to display the Setup/Help screen.
2. Click on the Backlight icon and wait for the Backlight window to pop up.
3. Drag the slider left to bright up the screen or drag the slider right to bright down.

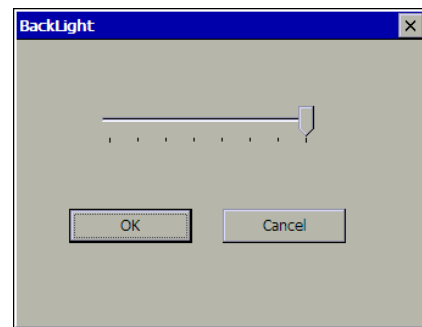


Figure 5.8: Backlight

4. Click on OK to save your configuration and exit or click Cancel to exit without saving changes.

5.8. Beep

The Beep function allows you to control audible beeping.

1. Follow the instructions in General Procedures to display the Setup/Help screen.
2. Click on the Beep icon and wait for the Beep window to pop up.

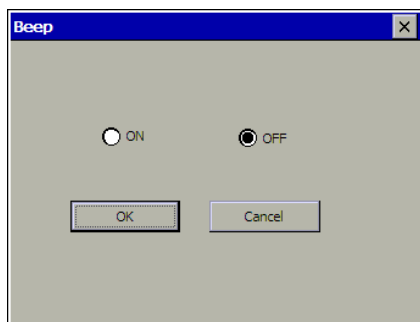


Figure 5.9: Beep

3. Click on the ON option for audible beeping or click on OFF to mute it.
4. Click on OK to save your configuration and exit or click Cancel to exit without saving changes.

5.9. Touch

The Touch function allows you to calibrate the touch screen.

1. Follow the instructions in the General Procedures on page 33 to display the Setup/Help screen.
2. Click on the Touch icon and wait for Touch screen to pop up.
3. Click on the center of the target and briefly hold the stylus pen.
4. Repeat the action as the target moves around the screen.
5. Tap the screen to register saved data. To exit without saving changes, simply wait for 30 seconds.

NOTE: Only use the supplied stylus pen or plastic-tipped pens on touch screen display. Do not use pencil, pen or any other sharp object.

5.10. Remote Desk

The Remote Desk function allows you to view the screen of the scan tool on a computer and it also makes controlling the scan tool from a computer possible.

1. Ensure that the VNC Viewer has been properly installed into your computer. If not, please refer to Section 2.3 Install the PC Software on page 9.
2. Follow the instructions in the General Procedures on page 33 to display the Setup/Help screen.
3. Click on the Remote Desk icon and wait for “CEVNC: Current User Properties” window to pop up. Click on OK or Apply to make it effective.

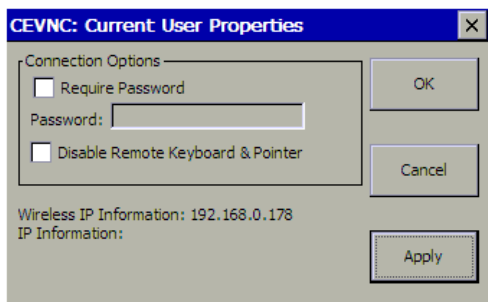


Figure 5.10: Remote Desk

NOTE: To make Remote Desk safer, click on “Require Password” and enter a password. To view the screen on a PC without having the PC to control the scan tool, click on “Disable Remote Keyboard & Pointer”.

4. Open the client software of VNC Viewer on your PC and wait for the “VNC viewer: Connection Details” window to pop up.

5. Enter Wireless IP Information (please check the Wi-Fi settings to obtain the information) in the Server box.

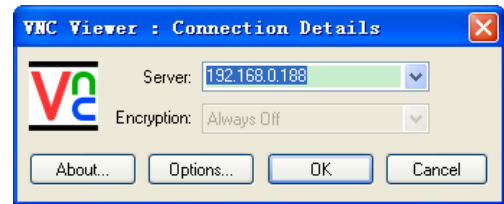


Figure 5.11: VNC Viewer

6. Set the Encryption box as “always off” if you have not set a password in step 2.
7. Click on OK

NOTE: If you have set a password in step 2, a “VNC Viewer: Authentication [No Encryption]” window will pop up. You are required to enter your password.

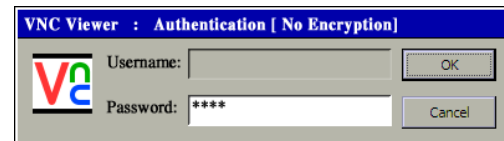


Figure 5.12: VNC Viewer: Password

5.11. About

The About function provides information of the scan tool regarding the version, hardware, product ID, copyright, and etc.

1. Follow the instructions in the General Procedures on page 33 to display the Setup/Help screen.
2. Click on the About icon and wait for the About window to pop up.
3. Click on OK to exit.

6. Software Update

The Update function allows you to update the scan tool software either through the scan tool or via a computer.

❶ IMPORTANT: *The System_File is the support program for the diagnostic application software of the scan tool. Whenever there is an update to this program, it will be downloaded automatically as you click on the Update tool bar on the home screen. An information window will pop up: “The System_File program is being updated. This will take a few minutes. Please wait!” When the downloading is finished, the scan tool will automatically restart to complete the update.*

6.1. Update the Software through the Scan Tool

1. Ensure that the scan tool is connected to a power source and the power LED light is illuminated.
2. Press the ON/OFF button to turn on the scan tool and wait for the home screen to appear.
3. Connect the scan tool to the Internet. (Please refer to the Section 5.2 Wi-Fi on page 33 or the Section 5.3 Network on page 34.
4. Click on Update, and the scan tool will load on and display the “MaxiDAS® DS708 Update V3.24: (user name)” screen.

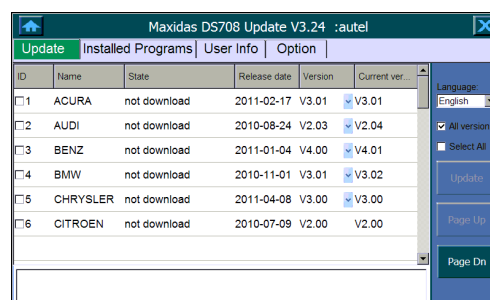


Figure 6.1: Update – Main Screen

✍ NOTE: *If the scan tool fails to log on the updating process, you might be using an illegal or limited connection. Please consult the Internet administrator and adjust Internet settings. To check the Internet status, you can try logging on a website on the scan tool.*

5. Select the program(s) that you would update.
 - Click on the All Version check box to show all programs.
 - Cancel the All Version check box to show only programs that are not yet installed or require updating.
 - Click on the Select All check box to update all programs in the list, or select the programs that you would update by clicking on the check boxes in front of the program names.
 - Please use the pull-down menu under the Version column to find earlier versions.

- Click on the Update button to start the updating process.

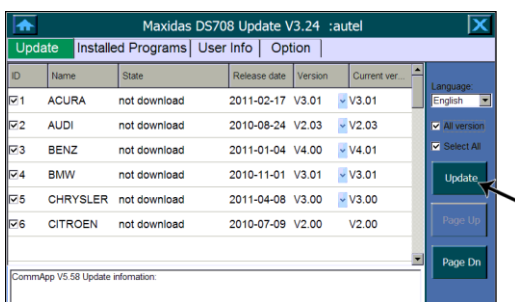


Figure 6.2: Update Function Key

NOTE: When two or more programs are selected, the scan tool will download and install them in turn instead of simultaneously.

- Click on the Stop button to suspend the updating process. When you renew the update, downloading will resume from the break point.

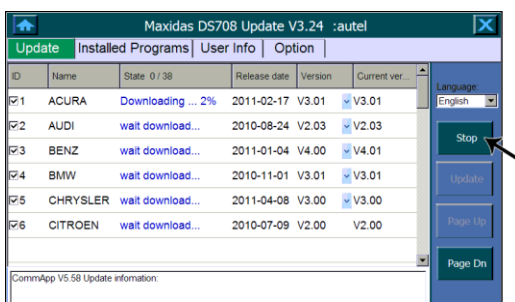


Figure 6.3: Stop Function Key

- When the downloading is completed, the downloaded program will be installed automatically. The new version will replace the original version if there is any.

6.2. Update the Scan Tool Software via a Computer

- Ensure that the update application software has been properly installed to your PC. If not, please refer to Section 2.3 Install the PC Software on page 9.
- Make sure that your computer is connected to the Internet.
- Load the SD card of the scan tool to your PC.
- Run the update client software. Wait for the Log In window to pop up.
- Put in the user name and password and wait for the “MaxiDAS® DS708 Update V3.24: (user name)” window to display.

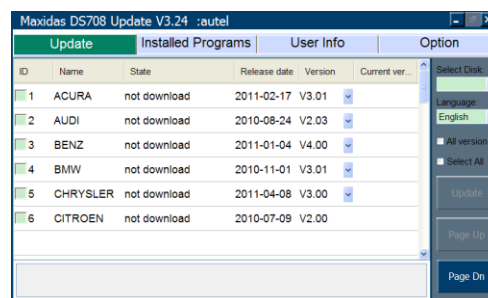



Figure 6.4: Update via Computer – Main Screen

- Use the pull-down menu under “Select Disk” to select an SD card if two or more SD cards of the scan tool have been connected to the PC.
- Select the program(s) that you would update.
 - Click on the All Version check box to show all programs.
 - Cancel the All Version check box to show only programs that are not yet installed or require updating.
 - Click on the Select All check box to update all programs in the list, or select the programs to update by clicking on the check boxes in front of the program names.
 - Use the pull-down menus under the Version column to find earlier versions.

8. Click on the Update button to start the updating process.
 **NOTE:** *When two or more programs are selected, at most five updating processes can be handled at one time on a computer.*
9. Click on the Stop button to suspend the updating process. When you renew the update, downloading will resume from the break point.
10. When the downloading is completed, the software will install the program automatically. The updated version will replace the original version in the scan tool if there is any.

6.3. View or Delete Programs

To view the list of installed programs or to delete an installed program, please follow these steps:

- Click on the Installed Programs column and the screen will show the list of programs installed.
- Select the program(s) that you would delete.
- Click on the Delete button. A window asking “Uninstall the program already?” will pop up for your confirmation.
- Click on Yes to delete the program selected, or on No to cancel the action.
- A File Progress window will pop up when the deleting process starts. Click on Cancel if you wish to keep the program.

6.4. Quick Troubleshooting Tips for Software Update

When the update program fails, the scan tool will pop up a reminder. To troubleshoot failures, follow these instructions:

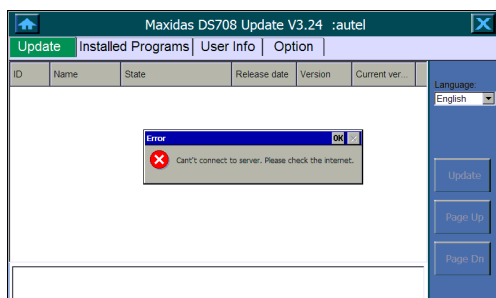


Figure 6.5: Update Failure Screen – Internet Failure

- When the scan tool software is being updated through the scan tool:
 - Make sure that the scan tool is connected to the Internet. Or,
 - Try updating the scan tool software via computer.
- When the scan tool software is being updated via a computer:
 - Make sure that the computer is connected to the Internet.
 - It is suggested that the computer programs using massive Internet resources be suspended so that the updating will be smoother.

- The Autel server might have encountered a failure for the time being. Please try updating at a later time.
- Ensure that the scan tool has been registered on-line.
- Ensure that the write-protect of your SD card is off.

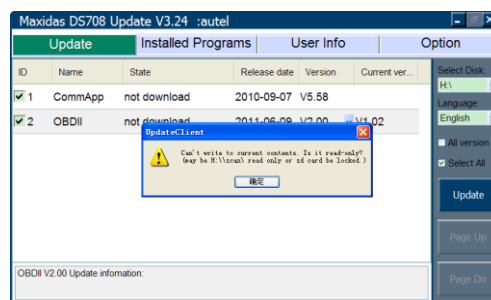


Figure 6.6: Update Failure Screen – SD Card Locked

- If your SD card is too full to load any new application, please delete diagnostic applications of vehicle makes that are scarcely used.
- Ensure that you are using a legal version of the scan tool's software.

7. Maintenance, Warranty & Service

7.1. Cleaning the Touch Screen

The touch screen can be cleaned with a soft cloth and alcohol or a mild window cleaner.

i **IMPORTANT:** *Do not use any abrasive cleansers or automotive chemicals on the touch screen.*

7.2. Cleaning and Inspecting the Unit

When using the MaxiDAS[®] DS708 unit, make sure to do the following:

1. Check the housing, wiring, and adaptors for dirt and damage before and after each use.
2. At the end of each working day, clean the MaxiDAS[®] DS708 housing, wiring, and adapters with a clean damp cloth.









i **IMPORTANT:** *Do not use any abrasive cleansers or automotive chemicals on the MaxiDAS[®] DS708 unit.*

7.3. Quick Troubleshooting Tips

1. Ensure that the scan tool is connected to a power source and the Power LED light is illuminated.
2. Ensure that the SD card is inserted into the scan tool.
3. Ensure that the scan tool has been registered.
4. Ensure that the system software and diagnostic application software are properly updated.
5. Ensure that the scan tool is connected to the Internet.
6. Check all cables, connections and indicators to see if the signal is being received.
7. Do not use the scan tool beside microwave ovens, cordless phones and some medical or scientific instruments to prevent signal interference.
8. Ensure that the computer installed with the PCLink software is connected to a printer.
9. Ensure that the computer is connected to a network if any of the scan tool's functions are to be realized on the computer.

If your problems persist, please contact Autel Tech Support or your local selling agent.

7.4. Definitions of Navigation Buttons

-  The house icon appears in the upper left corner of the screen. Clicking once leads to the home screen of the scan tool.
-  The question mark icon appears in the upper left corner of the screen. Clicking once leads to the website of www.auteltech.com.
-  The camera icons appear in the upper right corner of the screen. Clicking once leads to screen capture.
-  The Internet icon appears in the upper right corner of the screen. Clicking once leads to the Internet surfer.
-  The signal icon appears in the upper right corner of the screen. The icon indicates the status of WLAN settings, and it is green when the scan tool is connected to Wi-Fi.
-  The computer icon appears in the upper right corner of the screen. The icon indicates the status of Ethernet. The red cross disappears when the scan tool is connected to wired network.
-  The disc icon appears in the upper right corner of the screen. Clicking once leads to the data logging menu.
-  The computer and radar icon appears in the upper right corner of the screen. Clicking once leads to the remote desk settings. The red cross disappears when the remote desk function is engaged.

7.5. Service Procedures


7.5.1. Technical Service

If you have any questions on the operation of the product, please:

- Call 1-877-288-3587/ 1-877-AUTELUS (North America) or 0086-755-86147779 (China).
- Contact the local selling agent.
- Visit our website at www.auteltech.com or www.maxidas.com.

7.5.2. Repair Service

If it becomes necessary to return the scan tool for repair, please download the repair service form from our website at www.maxidas.com and fill in the form. The following information must be included:

- Company name
 - Contact name
 - Telephone Number
 - Description of the problem
 - Proof-of-purchase for warranty repairs
 - Preferred method of payment for non-warranty repairs
-  **NOTE:** For non-warranty repairs, payment can be made with Visa, Master Card, or with approved credit terms.

Send the unit to your local agent, or to this address:

Rm. 2205-2206, Overseas Chinese Scholars Venture Bldg.

Hi-Tech Industrial Park,

Nanshan District, Shenzhen, 518057

China

7.5.3. Order Information

Replacement and optional parts can be ordered directly from your Autel authorized tool supplier.

Your order should include the following information:

- Quantity
- Part number
- Item description

7.6. Limited One Year Warranty

Autel warrants to its customers that this product will be free from all defects in materials and workmanship for a period of one (1) year from the date of the original purchase, subject to the following terms and conditions:

1. The sole responsibility of Autel under the Warranty is limited to either the repair or, at the option of Autel, replacement of the scan tool at no charge with Proof of Purchase. The sales receipt may be used for this purpose.
2. This warranty does not apply to damages caused by improper use, accident, flood, lightning, or if the product was altered or repaired by anyone other than the Manufacturer's Service Center.
3. Autel shall not be liable for any incidental or consequential damages arising from the use, misuse, or mounting of the scan tool. Some states do not allow limitations on how long an implied warranty lasts, so the above limitations may not apply to you.
4. All information in this manual is based on the latest information available at the time of publication and no warranty can be made for its accuracy or completeness. Autel reserves the right to make changes at any time without notice.

Autel[®]

Autel Intelligent Technology Co., Ltd.
All Rights Reserved

www.maxidas.com | www.auteltech.com